



19985 NW 13th Street
Dunnellon, FL 34431
(352)877-9040
www.robinsonglazing.com
FL License #SCC131152174

Robinson Glazing Solutions, LLC

DOLLAR TREE

MARIANNA, FLORIDA



A Glass and Glazing Proposal for:

Architect:

CLARK, GEER, LATHAM & Associates, inc.
3901 Spring Hill Avenue
Mobile, AL 36608

General Contractor:

Respectfully submitted by,

Robert F. Moxham III, Pre-Construction Estimator
rmoxham@robinsonglazing.com



Robinson Glazing Solutions, LLC

DOCUMENTS

June 18, 2020

DOLLAR TREE
MARIANNA, FLORIDA

Robinson Glazing Solutions, LLC is pleased to present our Proposal for Construction Services at the above project. Our proposal is based on the following documents:

1. Architectural Drawings
 - A. A-1.0, A-1.1, A-2.2, A-2.3, A-2.4, A-3.0, A-3.1, and A-4.0 DATED: 04/15/2020 – Issued for Permit and Construction
 - B. “NO SPECIFICATIONS WHERE PROVIDED FOR DOWNLOAD”

SCOPE OF WORK

07 920 Joint Sealants

1. (81) +/- Lineal Feet, Exterior Sealant, Storefront & Entrances
 - One part, Standard Color Silicone
 - 1 Row

Exclusions to this section :

- Cosmetic sealants
- All other aspects of this section that do not pertain to our specific Work



Robinson Glazing Solutions, LLC

SCOPE OF WORK

08 80 00 Glazed Aluminum Storefront

1. (301) +/- Sq/ft
 - Kawneer IR-501 Impact Insulated Non-Thermal
 - 2-1/2" x 5" Exterior Storefront
 - Class I Clear Anodized
2. Glazed
 - Level D Large Missile, all locations
3. Warranty Periods
 - Material Warranty = 2 Years
 - Finish Warranty = 2 Years
 - Installation Warranty = 1 Year

Exclusions to this section :

- Cosmetic sealants
- Visual Mock-ups
- Performance Mock-ups
- 3 Coat Exotic or Metallic Kynar Pain

SCOPE OF WORK

08 80 00 Glazed Aluminum Entrances

1. (2) Exterior leaves
 - 2" Heavy Duty Medium Stile
 - Non-Thermal extrusions
 - 10" bottom rail
 - 9/16" LOW-E Laminated Glazing
 - Class I Clear Anodized
2. Fitted with Hardware as described, below
3. Warranty Periods
 - Material Warranty = 2 Years
 - Finish Warranty = 2 Years
 - Installation Warranty = 1 Year

Door Schedule :

<u>Door#</u>	<u>Door type</u>	<u>Single/Pair</u>	<u>Size</u>	<u>HDWSet #</u>	<u>Int or Ext ?</u>
500	ALUM	Pair	6' X 7'	500	Exterior



Robinson Glazing Solutions, LLC

08 80 00 Glazed Aluminum Entrances (continued).....

Hardware Set (#) :

- | | |
|---------------------------------|-------------------|
| a. BUTT HINGES | f. KEYED CYLINDER |
| b. MS-1850 LOCK | g. THUMBTURN |
| c. SURFACE MOUNTED CLOSER (NHO) | |
| d. PUSH / PULL HANDLES | |
| e. THRESHOLD w/ SWEEP | |

NOTE: ALL HARDWARE LISTED ABOVE IS TO BE SUPPLIED AS MANUFACTURE STANDARD AND COMPLY WITH FLORIDA PRODUCT APPROVAL TESTING.

Exclusions to this section :

- o Cosmetic sealants
- o 3 Coat Exotic or Metallic Kynar Paint
- o Mag lock and Cylinder/Core
- o Card readers
- o Water resistance/Field testing of Entrances
- o Wiring labor outside of our immediate framing

SCOPE OF WORK

08 80 00 Glazing

1. (259) Sq/Ft GL-1 at ALUMINUM STOREFRONT
 - 1-5/16" OA Thickness
 - 1/4" CLR Tp. w/ High Performance LOW-E Coating #2 Surface, 1/2" A.S., 9/16" clear H.S./ .090" PVB
2. (42) Sq/Ft GL-2 at ALUMINUM DOOR
 - 9/16" OA Thickness
 - 1/4" CLR Tp. w/ High Performance LOW-E Coating #2 Surface, .090" PVB Laminate, 1/4" CLR H.S.
3. (8) Sq/Ft GL-3 at HOLLOW METAL FRAME(by others) @ OFFICE 100
 - 1/4" OA Thickness
 - ONE WAY MIRROR
4. Warranty Periods
 - Warranty, Insulated Glass = (5) years
 - Warranty, Laminated Glass = (5) years

Exclusions to this section :

- o Cosmetic sealants
- o Wind Borne Debris Resistance
- o Heat Soaked glass
- o Argon filled units
- o Interior glass of any kind



Robinson Glazing Solutions, LLC

WARRANTY

1. Robinson Glazing Solutions, LLC (RGS) will directly provide a workmanship warranty for the installation for the storefront, glass, and entrance for a period of one year after substantial completion.
2. All warranties for materials and products manufactured by others will be provided directly from the manufacturer and will be assigned to the owner to the extent they are provided to RGS.
3. RGS is not providing its own warranty against failure or defects in products manufactured by others. However, RGS will assist in managing these warranties should an issue arise.
4. Damage to any products or actions that would void a warranty caused by others not under RGS's control are not covered by RGS or any manufacturer under RGS's scope of work.

EXCLUSIONS

1. Permit fees
2. Off-hours or weekend work
3. Bond cost
4. Warranty Bond
5. Extended warranties
6. Protection of glass and metal
7. Field testing
8. Demolition
9. Temporary enclosures
10. Final cleaning
11. Low Iron glass of any kind
12. Glass Canopies or canopies of any kind
13. Floor Closures or Base molding
14. Parapet Cap Flashing
15. Mirrors or borrowed lite glazing framing
16. Interior doors
17. Hollow Metal frames
18. Louvers, Air diffusers or grilles, including those potentially glazed within Curtain Walls
19. Window shades, blinds or screens
20. Interior demising wall / partition wall closures
21. Window washing provisions, tiebacks, equipment, tracks or preparation for same
22. Signage or preps for attachment of same
23. Out of sequence erection
24. "Leapfrogging" during the erection process
25. Facility for off-site storage; all materials will be shipped direct to jobsite for installation
26. Any overtime premiums unless caused by RGS own workforce
27. Mockup testing (existing test reports from previously tested curtain walls will be provided)
28. Street closure permits and/or temporary pedestrian walkway protection

“PROPOSAL to Furnish & Install Materials Within”

Proposal, Exterior Storefront and Entrance:
(Excludes performance and payment bond)

\$ 31,309.00

Thirty one thousand, three hundred and nine dollars

RFQ

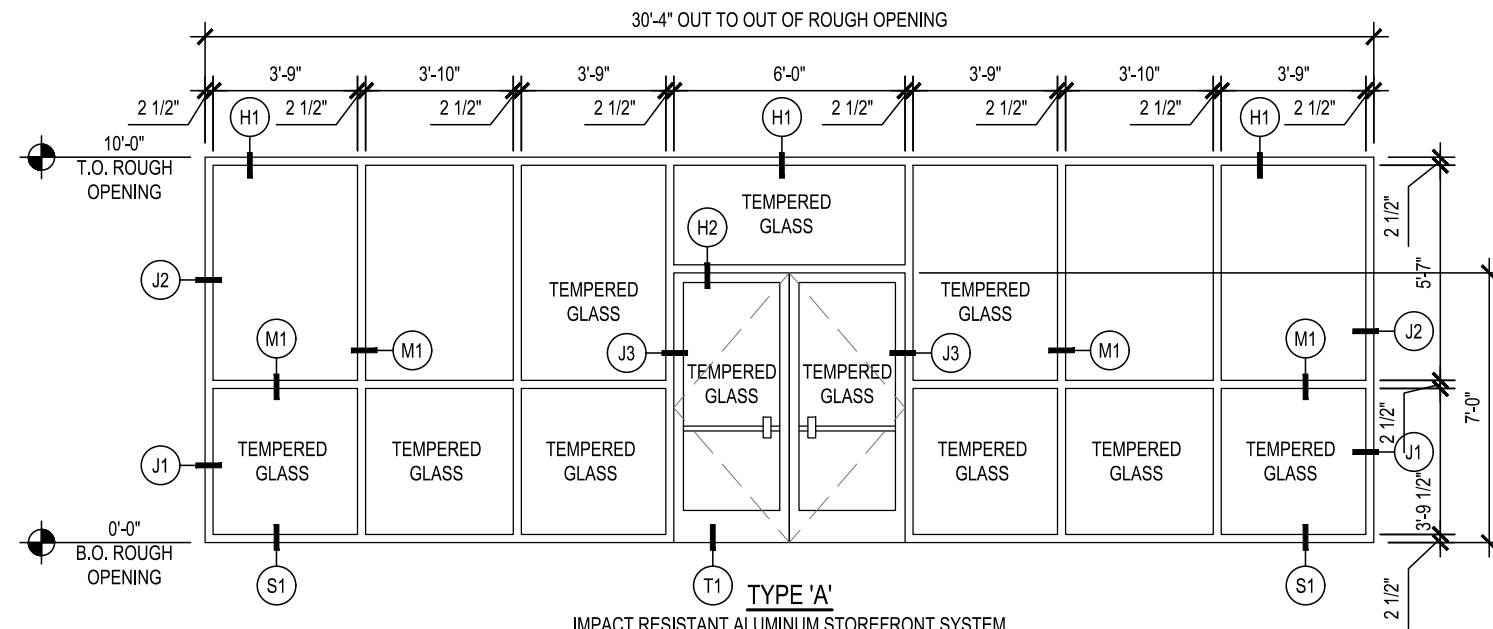
Project Name: DOLLAR TREE
Project Location: MARIANNA, FL
Request Date: 06/15/20 Bid Due Date: 06/17/20

Robinson Glazing Solutions, LLC

19985 NW 13th Dunnellon, FL 34431

Office: (352)877-9040

FL License #SCC131152174



1 STOREFRONT ELEVATION

A-3.0 SCALE: 1/4"=1'-0"

1-THUS
IR-501 2-1/2"x5"
Storefront Finish - CLEAR ANODIZED
Door Hardware Finish: US26D or Clear Anodized
IR 350 Medium Stile Impact Door 10" Rail
6'x7' LH Outswing

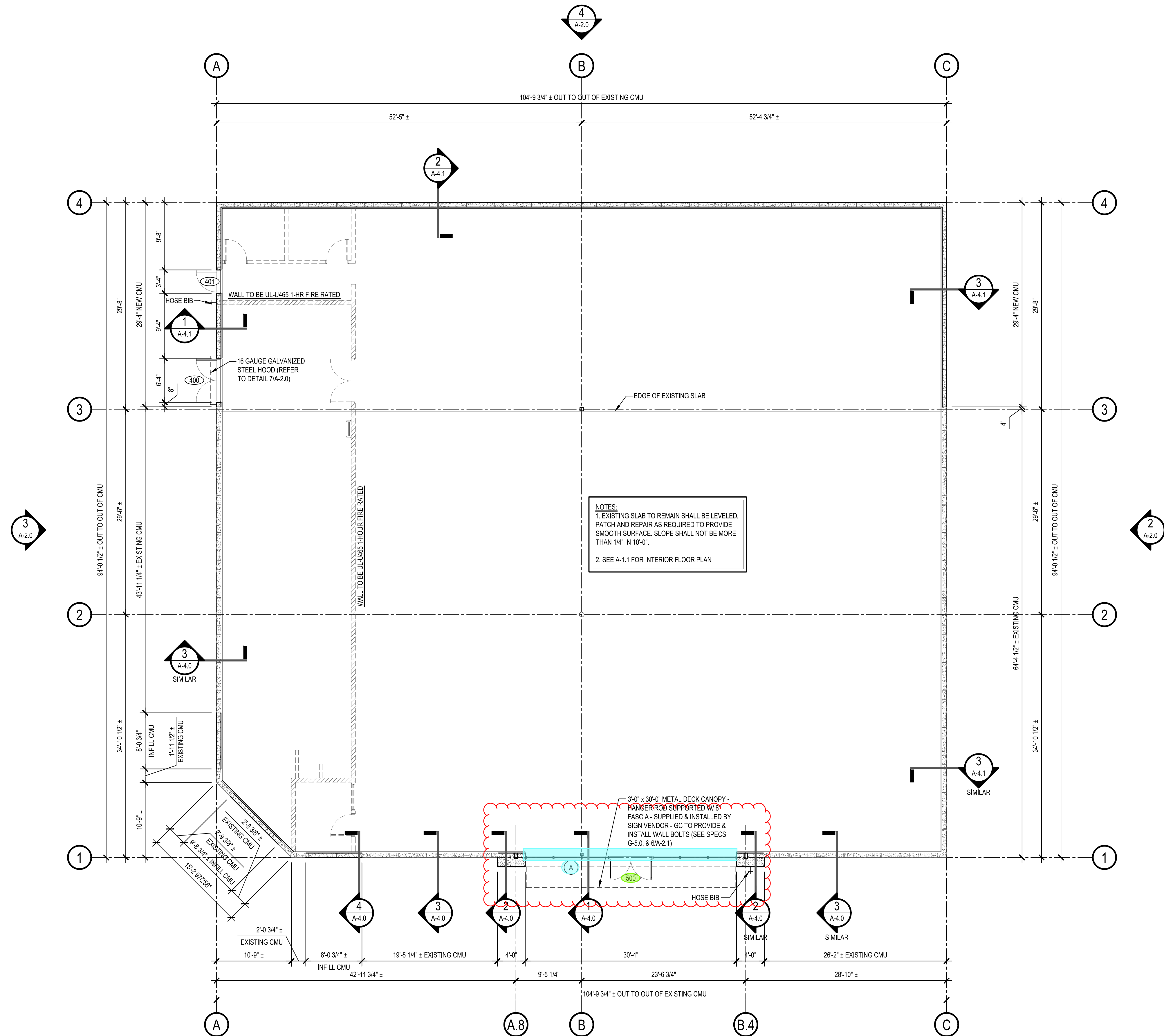
HDW # 500A

HINGES PER STOREFRONT MANUFACTURER
(BY GENERAL CONTRACTOR)
2 CLOSERS WITH STOP ARM AND DROP PLATE
2 PUSH PLATES (BY GENERAL CONTRACTOR)
2 PULL HANDLES (BY GENERAL CONTRACTOR)
1 KABA CYLINDER (SUPPLIED BY DOLLAR TREE)
1 COMMERCIAL GRADE DEADLOCK W/ THUMB
TURN ON SALES SIDE (SUPPLIED BY
GENERAL CONTRACTOR)
INACTIVE LEAF - KAWNEER CONTROLLER 2
POINT LOCKING SYSTEM

NOTE: CONTRACTOR SHALL VERIFY CLOSER
DOES NOT HAVE A HOLD-OPEN FEATURE. IF
CLOSER DOES, THE CONTRACTOR SHALL
REPLACE WITH NEW CLOSER.

**(NOTE: ALL
HARDWARE
TO BE
MANU'F STD
and COMPLY
WITH FPA
TESTING)**

LAST SAVED/ALDRED PRINTED BY: MARK ALDRED 4/15/2020 5:41:46 PM 11/19/10 dollar tree infill@md.madams.01a.ct.gov Floor Plan.dwg

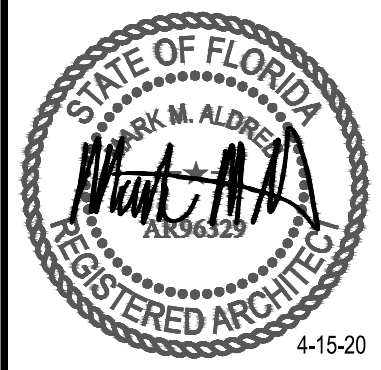


FLOOR PLAN
 SCALE: 1/8"=1'-0"

FLOOR PLAN LEGEND	
(A)	STOREFRONT TYPE (REFER TO SHEET A-3.0)
(500)	DOOR NUMBER (REFER TO SHEET A-3.1)

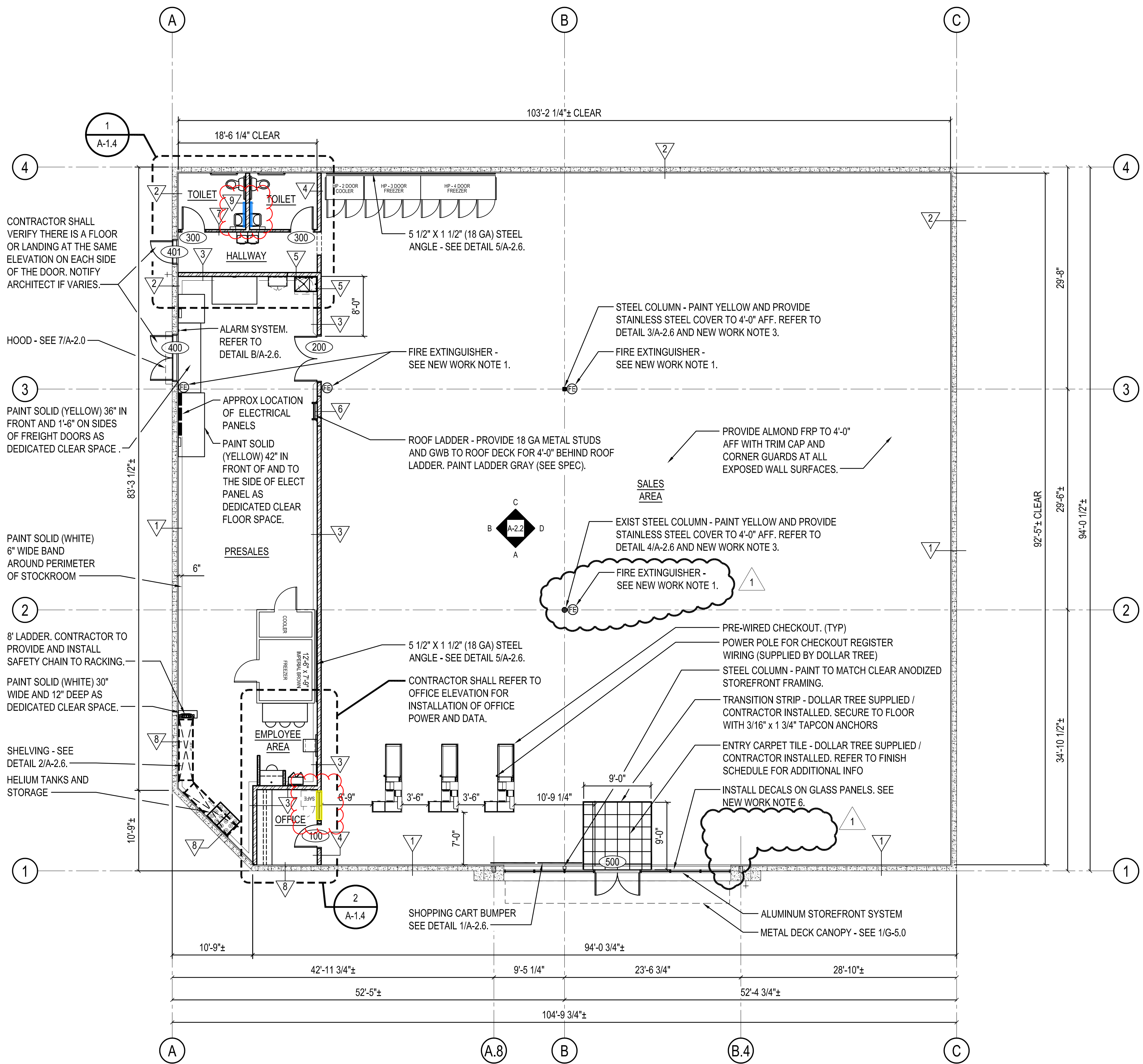
REV.	DATE	BY	DESCRIPTION

PROJECT NUMBER:	1910-60
DRAWN BY:	MMA
CHECKED BY:	MMA
ISSUE DATE:	4-15-20



THE WENESBY 4/30/2020 2:16:38 PM H:\2020\20104-00_DOLLAR_TREE\40465\Architectural\Shems\04A15A_1-1.dwg

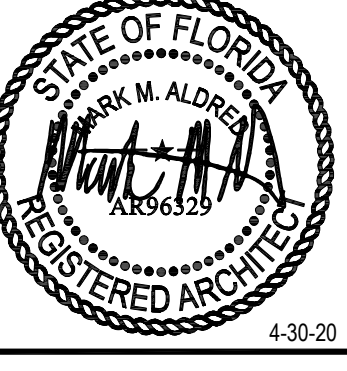
- ### WALL CONSTRUCTION TYPES
- 1 EXTERIOR WALL: EXISTING CMU WITH 1 1/2" METAL FURRING, 1 1/2" EXTRUDED POLYSTYRENE INSULATION, AND 5/8" GWB TO DECK ON INTERIOR SIDE. SEE DETAIL 3/A-4.0, FINISH PER FINISH SCHEDULE, SHEET A-3.1.
 - 2 EXTERIOR WALL: 8" CMU WITH 1 1/2" METAL FURRING, 1 1/2" EXTRUDED POLYSTYRENE INSULATION, AND 5/8" GWB TO DECK ON INTERIOR SIDE. SEE DETAIL 1.2, & 3/A-4.1. FINISH PER FINISH SCHEDULE, SHEET A-3.1.
 - 3 PARTITION WALL: 6" (20 GA) METAL STUDS @ 16" OC WITH ONE LAYER 5/8" TYPE "X" GWB EACH SIDE TO ROOF DECK. FIRE TAPE ALL JOINTS. CONSTRUCTION SHALL COMPLY WITH UL DESIGN #U465 FOR ONE HOUR FIRE RATING. SEE DETAIL 1/A-4.2. FINISH PER FINISH SCHEDULE, SHEET A-3.1.
 - 4 PARTITION WALL: 6" (20 GA) METAL STUDS @ 16" OC WITH ONE LAYER 5/8" GWB EACH SIDE TO ROOF DECK ON STOCKROOM / SALES AREA SIDE AND TO FINISHED CEILING ON TOILET / HALLWAY / OFFICE SIDE. PLUMBING WALLS SHALL HAVE WATER RESISTANT GWB. SEE DETAIL 3/A-2.3 FOR ADDITIONAL REQUIREMENTS AND BRACING. FINISH PER FINISH SCHEDULE, SHEET A-3.1.
 - 5 PARTITION WALL (WATER HEATER SUPPORT): 6" (18 GAGE) METAL STUDS @ 12" OC (4'-0" WIDE ON LONG SIDE AND 3'-0" WIDE ON SHORT SIDE OF MOP SINK) WITH ONE LAYER 5/8" TYPE "X" GWB EACH SIDE TO ROOF DECK. FIRE TAPE ALL JOINTS. CONSTRUCTION SHALL COMPLY WITH UL DESIGN #U465 FOR ONE HOUR FIRE RATING. SEE DETAIL 1/A-2.4. FINISH PER FINISH SCHEDULE SHEET A-3.1.
 - 6 PARTITION WALL (ROOF LADDER SUPPORT): 6" (18 GAGE) METAL STUDS @ 12" OC (4'-0" WIDE BEHIND ROOF LADDER) WITH ONE LAYER 5/8" TYPE "X" GWB EACH SIDE TO ROOF DECK. FIRE TAPE ALL JOINTS. CONSTRUCTION SHALL COMPLY WITH UL DESIGN #U465 FOR ONE HOUR FIRE RATING. SEE DETAIL 1/A-2.4. FINISH PER FINISH SCHEDULE SHEET A-3.1.
 - 7 PARTITION WALL: 3 5/8" (20 GA) METAL STUDS @ 16" OC WITH ONE LAYER 5/8" GWB TO FINISHED CEILING. PLUMBING WALLS ON INTERIOR OF TOILETS SHALL HAVE WATER RESISTANT GWB. SEE DETAIL 2/A-2.4. FINISH PER FINISH SCHEDULE, SHEET A-3.1.
 - 8 EXTERIOR WALL: EXISTING CMU WITH OPENING TO BE FILLED WITH NEW CMU, 1 1/2" METAL FURRING, 1 1/2" EXTRUDED POLYSTYRENE INSULATION, AND 5/8" GWB TO DECK ON INTERIOR SIDE. SEE DETAIL 4/A-4.0, FINISH PER FINISH SCHEDULE, SHEET A-3.1.
 - 9 PLUMBING PARTITION: 6" (20 GA) METAL STUDS @ 16" OC WITH ONE LAYER 5/8" GWB EACH EXPOSED SIDE TO FINISHED CEILING. PLUMBING WALLS ON INTERIOR OF TOILETS SHALL HAVE WATER RESISTANT GWB. FINISH PER FINISH SCHEDULE, SHEET A-3.1.
- FREEZER / COOLER NOTE:** CONTRACTOR SHALL VERIFY FLOOR IS LEVEL WITHIN 1/4" IN 10 LINEAR FEET UNDER FREEZER/COOLER REACH-INS AND STORAGE. CONTRACTOR SHALL NOTIFY THE DOLLAR TREE CONSTRUCTION PM IF THIS REQUIREMENT IS NOT MET. CONTRACTOR SHALL RUN ALL PIPING / CONDUIT FOR FREEZER / COOLER WITHIN WALL (NOT EXPOSED ON SALES FLOOR)



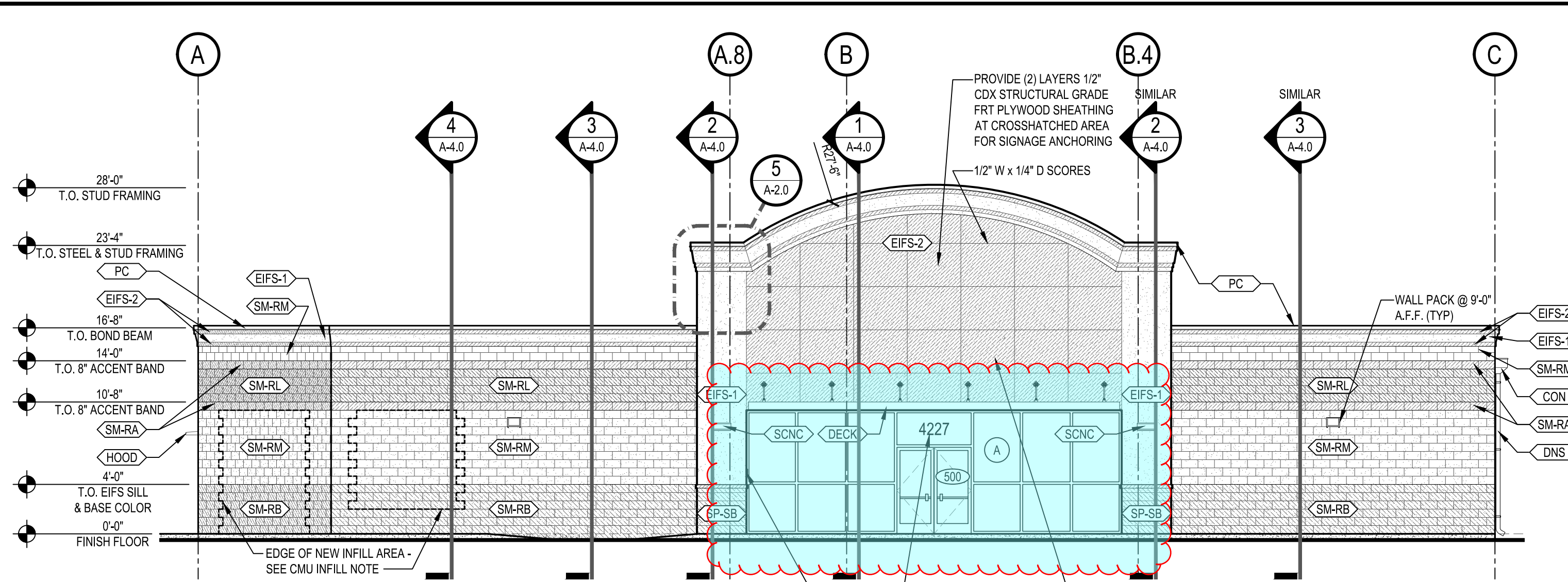
INTERIOR FLOOR PLAN
SCALE: 1/8"=1'-0"

REV.	DATE	BY	DESCRIPTION
1	4-30-20	TEH	FIRE EXTINGUISHER RELOCATED
REVISION LOG			

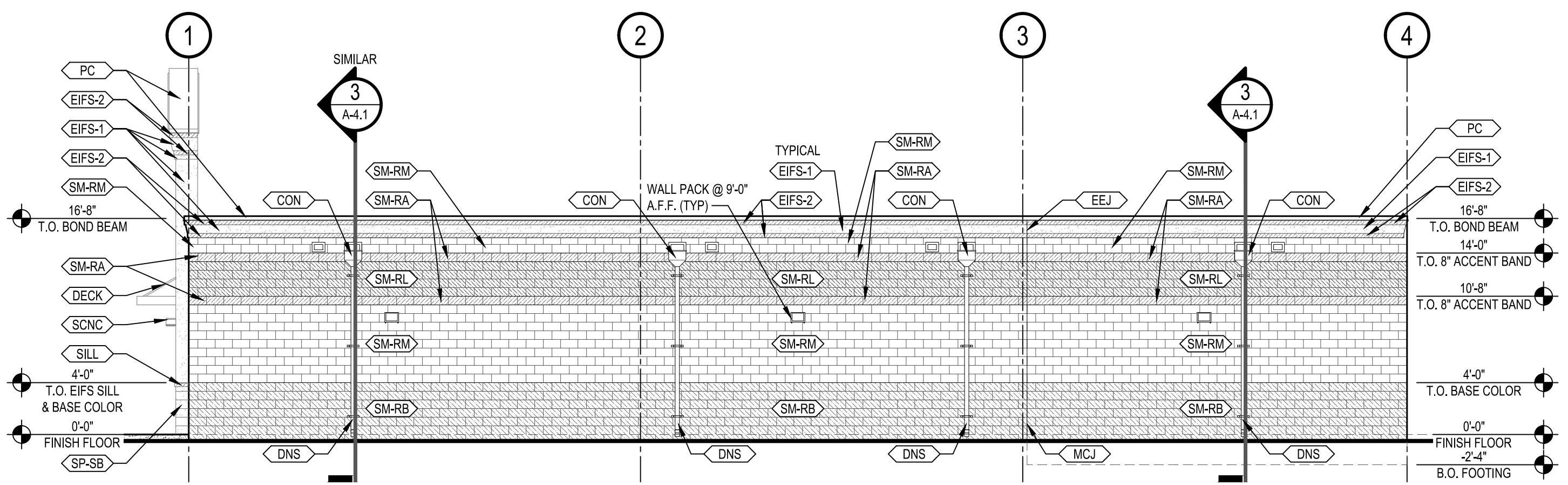
PROJECT NUMBER: 20104-05
 DRAWN BY: TEH
 CHECKED BY: MMA
 ISSUE DATE: 04/15/2020
 ISSUED FOR BIDS AND PERMITS



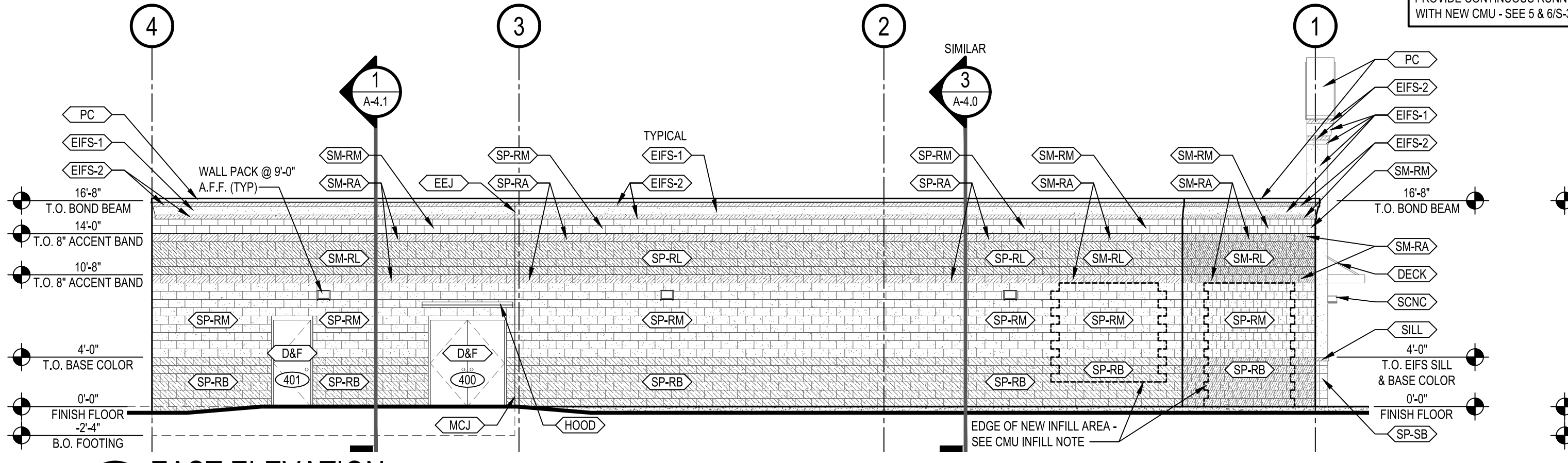
SHEET TITLE:
INTERIOR FLOOR PLAN & WALL CONSTRUCTION TYPES
 SHEET NUMBER:
A-1.1



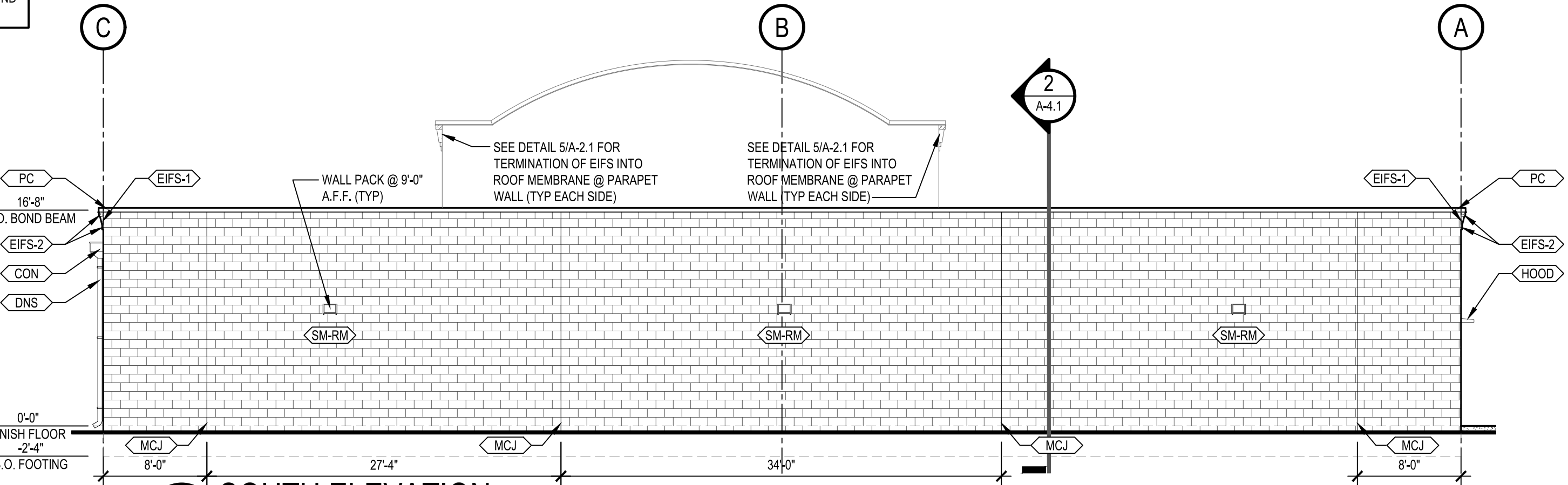
1 NORTH ELEVATION
A-2.0 SCALE: 1/8"=1'-0"



2 WEST ELEVATION
A-2.0 SCALE: 1/8"=1'-0"



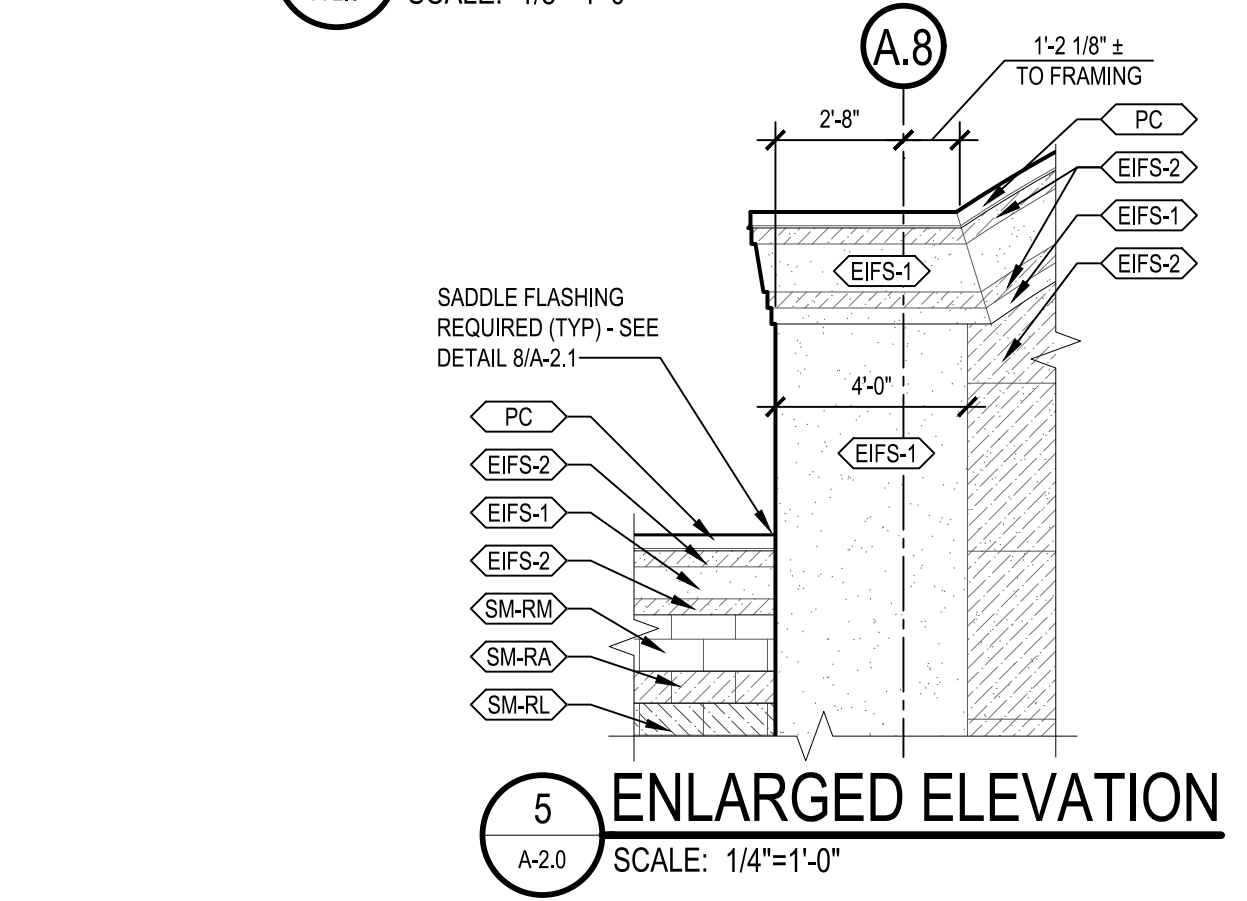
3 EAST ELEVATION
A-2.0 SCALE: 1/8"=1'-0"



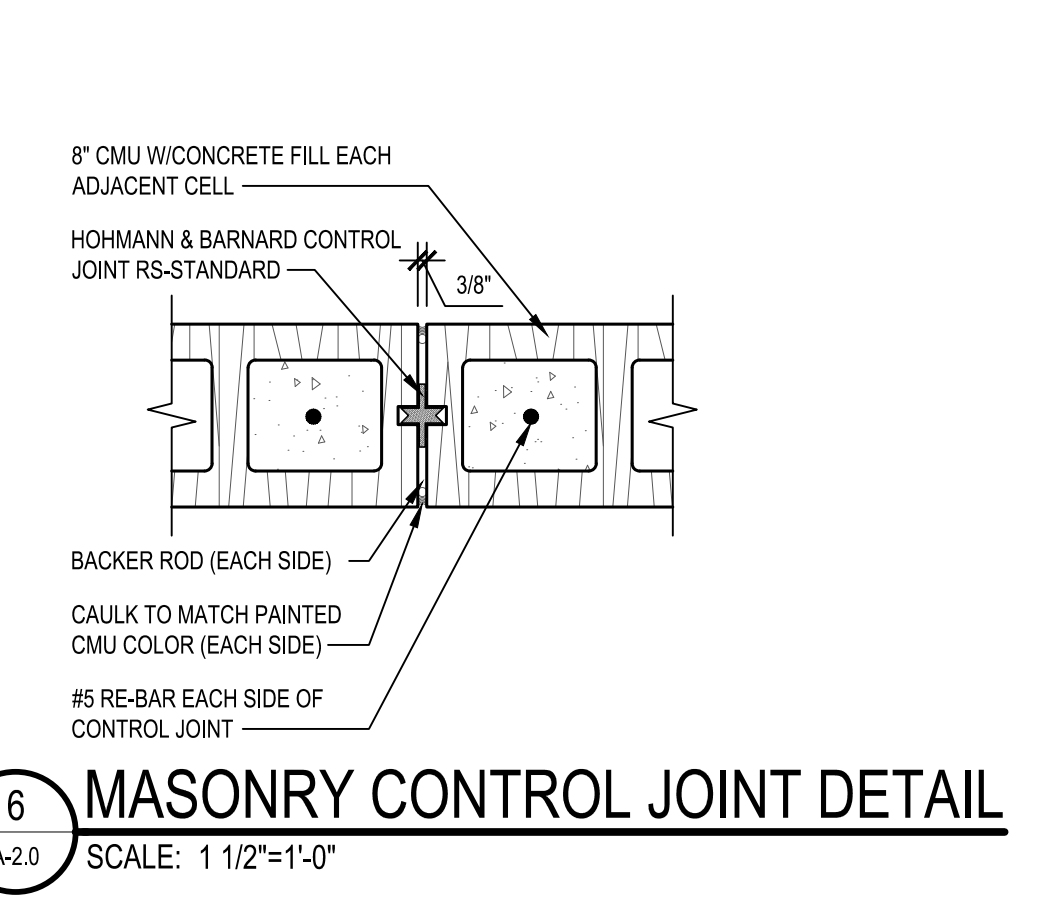
4 SOUTH ELEVATION
A-2.0 SCALE: 1/8"=1'-0"

KEYNOTE	HATCH	DESCRIPTION	COLOR
<SM-RM>		SMOOTH-FACE CMU - RUNNING BOND - MAIN COLOR	SHERWIN WILLIAMS 'BALANCED BEIGE' SW7037
<SP-RM>		SPLIT-FACE CMU - RUNNING BOND - MAIN COLOR	SHERWIN WILLIAMS 'BALANCED BEIGE' SW7037
<SM-RA>		SMOOTH-FACE CMU - RUNNING BOND - ACCENT COLOR	SHERWIN WILLIAMS 'AESTHETIC WHITE' - SW7035
<SP-RA>		SPLIT-FACE CMU - RUNNING BOND - ACCENT COLOR	SHERWIN WILLIAMS 'AESTHETIC WHITE' - SW7035
<SP-SB>		SPLIT-FACE CMU - STACK BOND - BASE COLOR	SHERWIN WILLIAMS 'VIRTUAL TAUPE' - SW7039
<SM-RB>		SMOOTH-FACE CMU - RUNNING BOND - BASE COLOR	SHERWIN WILLIAMS 'VIRTUAL TAUPE' - SW7039
<SP-RB>		SPLIT-FACE CMU - RUNNING BOND - BASE COLOR	SHERWIN WILLIAMS 'VIRTUAL TAUPE' - SW7039
<SM-RL>		SMOOTH-FACE CMU - RUNNING BOND - LOGO COLOR	SHERWIN WILLIAMS 'ENVY' - SW6925
<SP-RL>		SPLIT-FACE CMU - RUNNING BOND - LOGO COLOR	SHERWIN WILLIAMS 'ENVY' - SW6925
<EIFS-1>		EIFS - COLOR 1 (FINISH - PRODUCT STO 310)	STO 'SANDSTONE' 93860 (NA10-0052)
<EIFS-2>		EIFS - COLOR 2 (FINISH - PRODUCT STO 310)	STO 'SMOKED PUTTY' 93240 (NA10-0053)
<SILL>		1" x 3 5/8" EIFS SILL W/ BEVEL - SEE DETAIL 3/A-2.1	STO 'SMOKED PUTTY' 93240 (NA10-0053)
<PC>	NA	24 GAUGE GALVANIZED METAL PARAPET CAP PER ANSI/SPRI ES-1 ASSEMBLY UL-12A	SHERWIN WILLIAMS 'ENVY' - SW6925
<DNS>	NA	4"x4" GALVANIZED METAL DOWNSPOUT W/ 3 STRAPS	PAINT TO MATCH ADJACENT CMU - USE 'BALANCED BEIGE' SW7037 OVER 'SM-RL', 'AESTHETIC WHITE' - SW7035 OVER 'SM-RA', 'ENVY' - SW6925 OVER 'SM-RL', & 'VIRTUAL TAUPE' - SW7039 OVER 'SM-RB'
<CON>	NA	8"x16" GALVANIZED METAL CONDUCTOR HEAD & THRU WALL FLASHING W/ ADJACENT OVERFLOW	PAINT TO MATCH ADJACENT CMU - USE 'BALANCED BEIGE' SW7037 OVER 'SM-RM', 'AESTHETIC WHITE' - SW7035 OVER 'SM-RA', & 'ENVY' - SW6925 OVER 'SM-RL'
<DECK>	NA	3'-0" METAL DECK CANOPY - HANGER ROD SUPPORTED W/ 8" FASCIA - SUPPLIED & INSTALLED BY SIGN VENDOR - GC TO PROVIDE & INSTALL WALL BOLTS (SEE SPECS) (SEE A-1.0 FOR LENGTHS & APPLICABLE DETAILS)	SHERWIN WILLIAMS 'ENVY' - SW6925
<HOOD>	NA	16 GAUGE GALVANIZED STEEL HOOD (REFER TO DETAIL 7/A-2.0)	SHERWIN WILLIAMS 'BALANCED BEIGE' SW7037
<SCNC>		NEL LED WALL SCONCE @ 8'-8" A.F.F. (SEE ELECTRICAL)	DARK BRONZE
<D&F>	NA	STEEL DOOR & HOLLOW METAL FRAME	SHERWIN WILLIAMS 'BALANCED BEIGE' SW7037
(A)	STOREFRONT TYPE (REFER TO SHEET A-3.0)	PAINTING NOTES: CMU - SEE SPECS	
(500)	DOOR NUMBER (REFER TO SHEET A-3.1)	METAL- (2) COATS OF S-W METALTEX ACRYLIC SEMI-GLOSS (B42 SERIES)	
(MCJ)	MASONRY CONTROL JOINT (REFER TO DETAIL 9/A-2.0)	LINTELS- PAINT STOREFRONT LINTELS PER 'METAL' NOTE ABOVE WITH SHERWIN WILLIAMS 'BALANCED BEIGE' SW7037 AFTER PRIMING WITH (1) COAT OF S-W PRO INDUSTRIAL PRO-CRYL UNIVERSAL PRIMER (B66-310 SERIES)	
(EEJ)	EIFS EXPANSION JOINT (REFER TO DETAIL 2/A-2.1)		

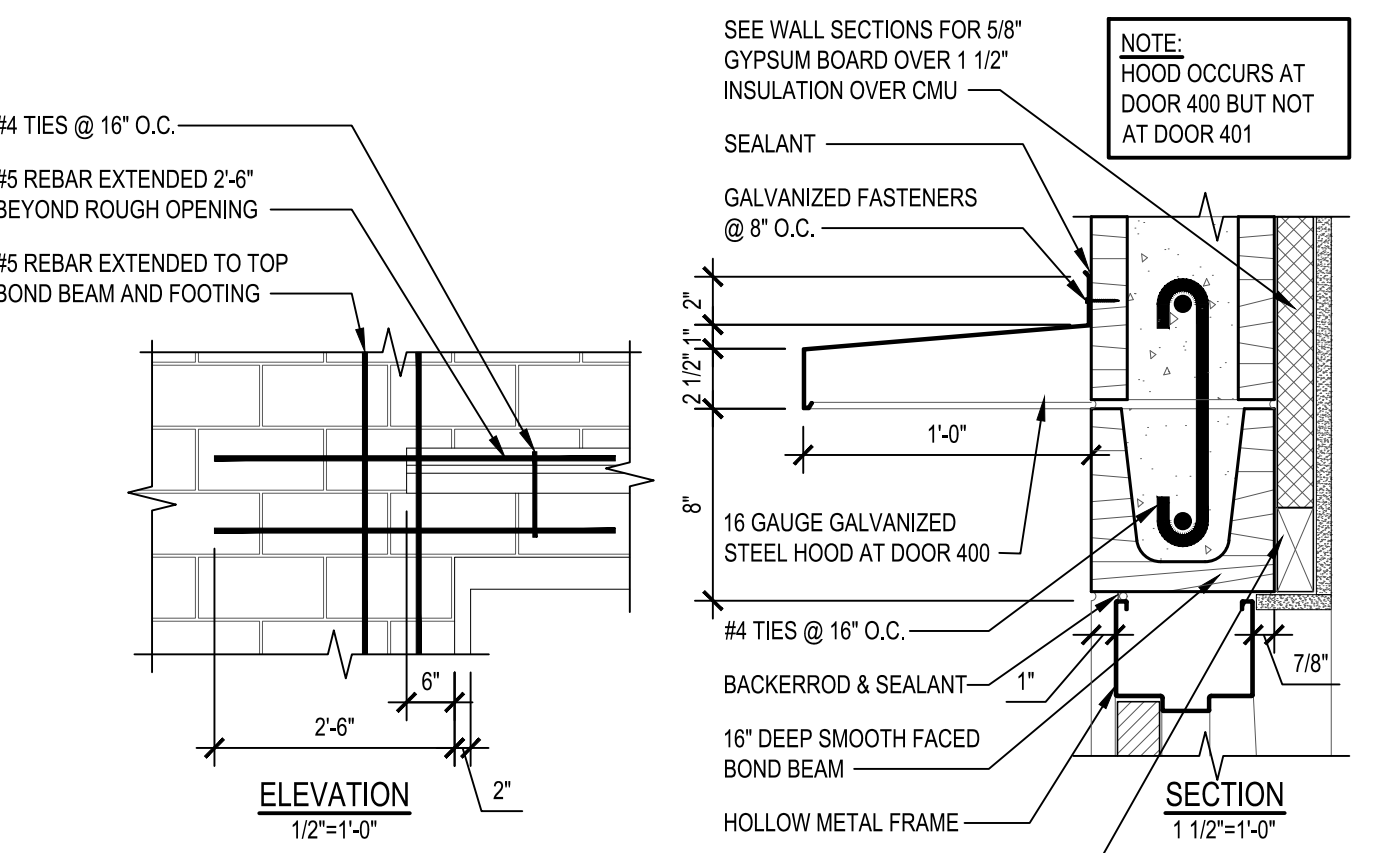
ELEVATION LEGEND



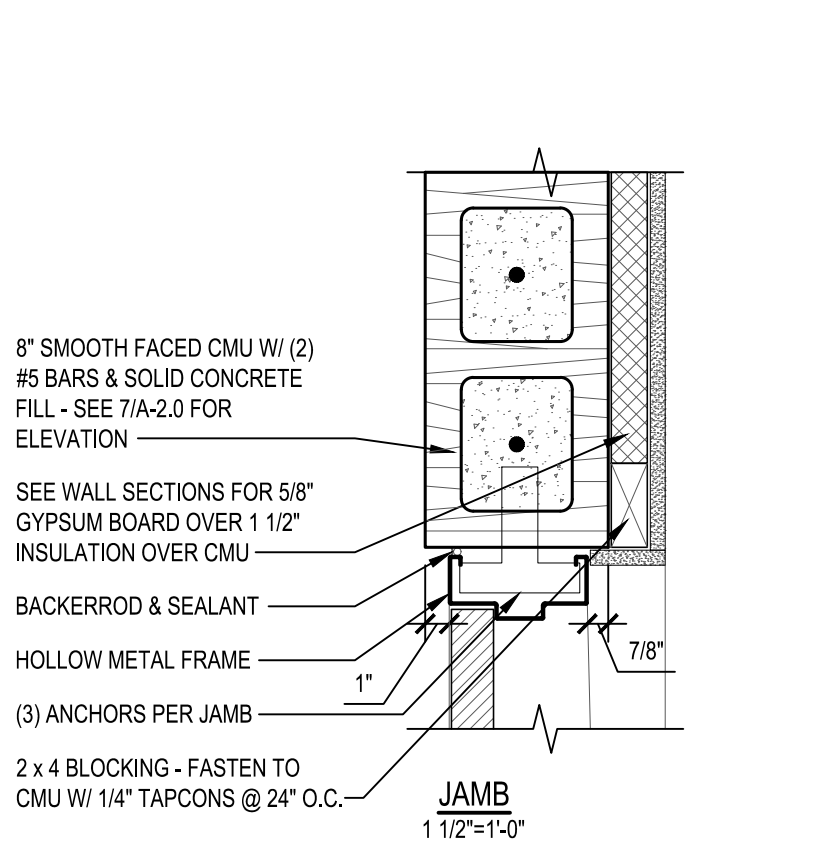
5 ENLARGED ELEVATION
A-2.0 SCALE: 1/4"=1'-0"



6 MASONRY CONTROL JOINT DETAIL
A-2.0 SCALE: 1 1/2"=1'-0"



7 HEAD & HOOD DETAIL AT DOORS 400 & 401
A-2.0 SCALE: 1/2"=1'-0" & 1 1/2"=1'-0"

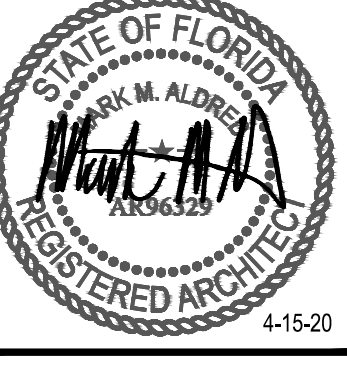


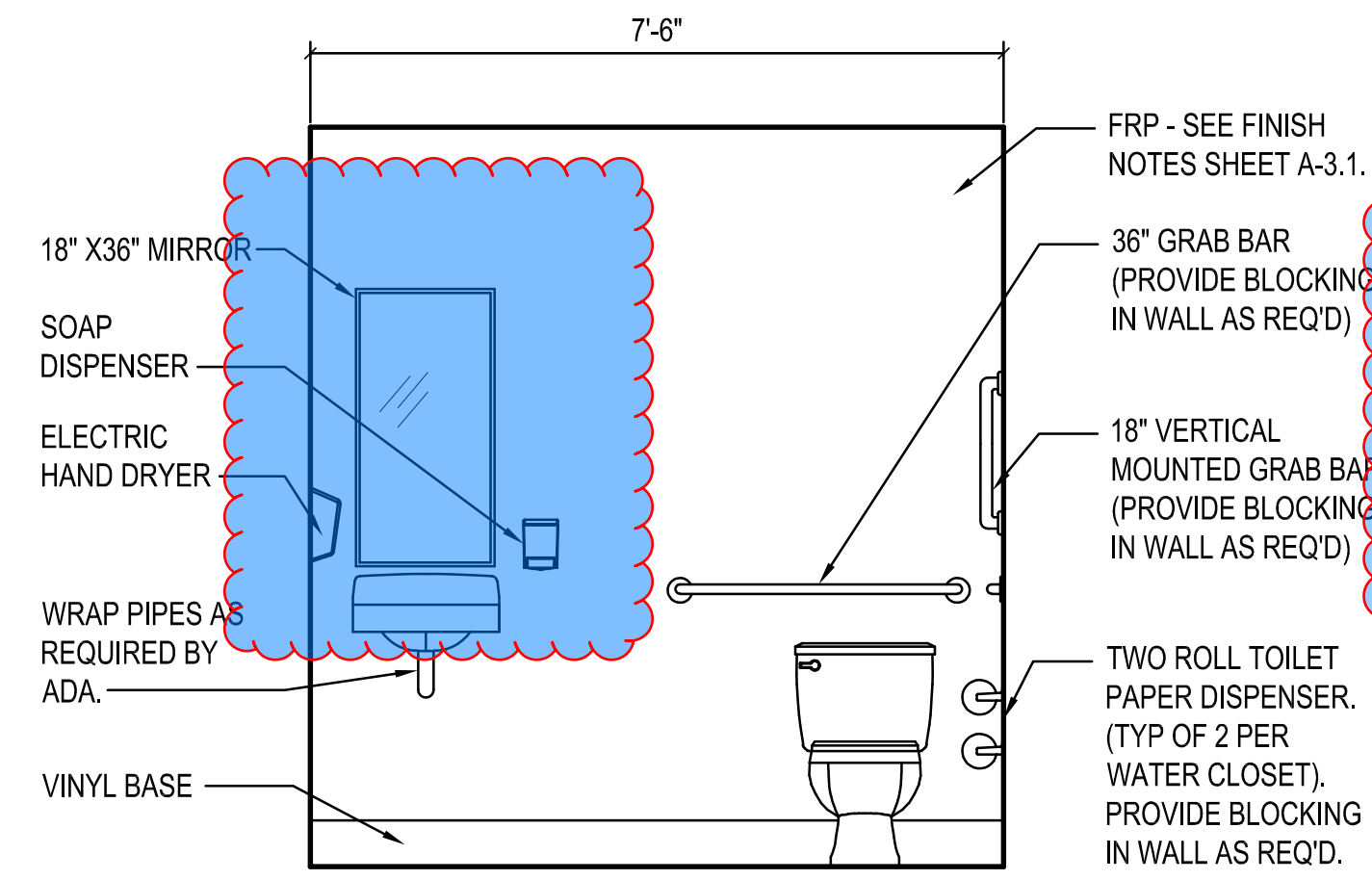
J1 JAMB AT DOORS 400 & 401
A-2.0 SCALE: 1 1/2"=1'-0"

LAST SAVED/ALIGNED PRINTED BY: MARK ALDRIDG 4/15/2020 5:41:55 PM I:\1910 dollar tree\interior\2020\marianna_1910_20 Exterior Elevations.dwg

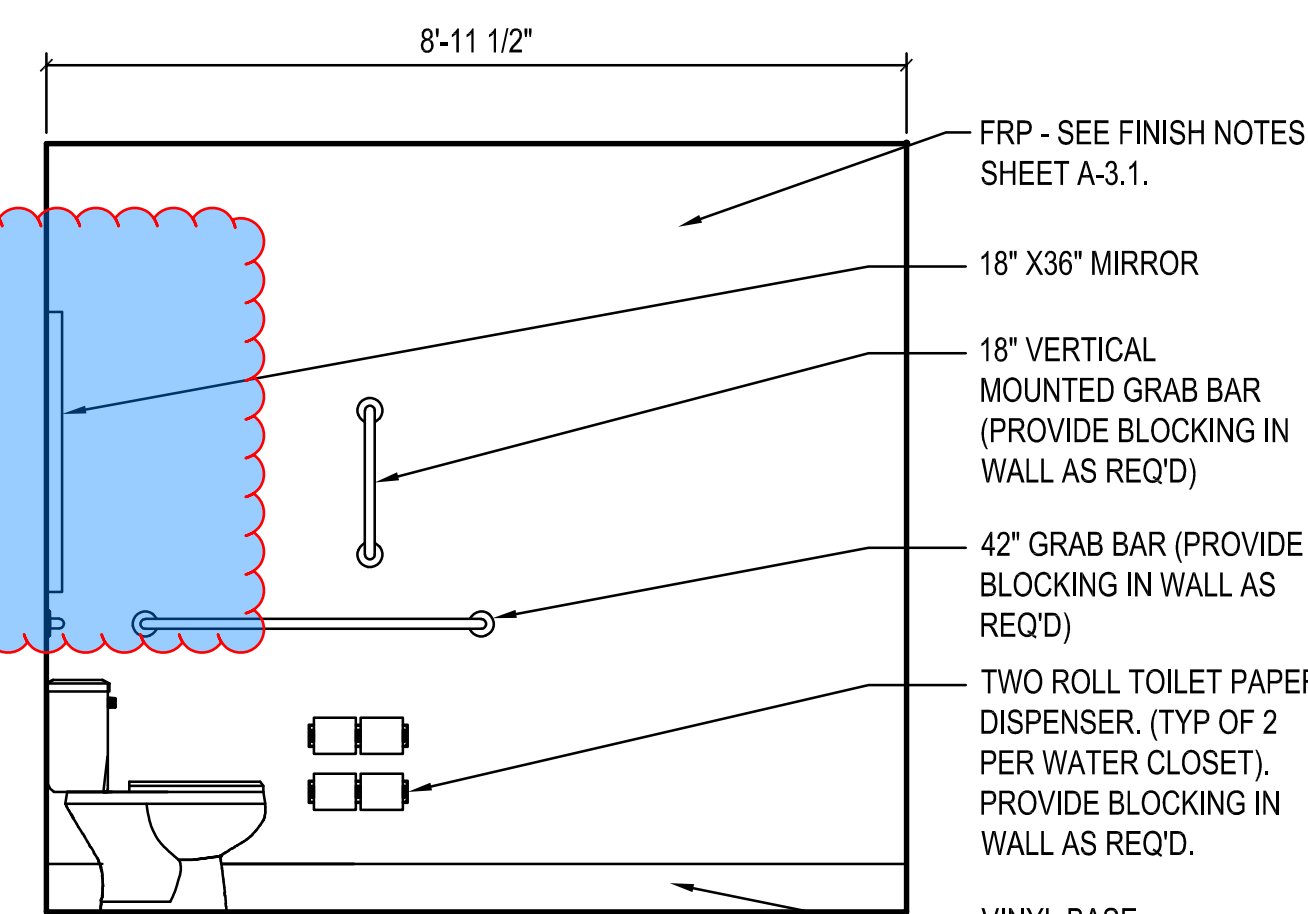
REV.	DATE	BY	DESCRIPTION

PROJECT NUMBER: 1910-60
DRAWN BY: MMA
CHECKED BY: MMA
ISSUE DATE: 4-15-20
ISSUED FOR BIDS & PERMITS





A TOILET ELEVATION
A-2.4 SCALE: 1/2" = 1'-0"



B TOILET ELEVATION
A-2.4 SCALE: 1/2" = 1'-0"

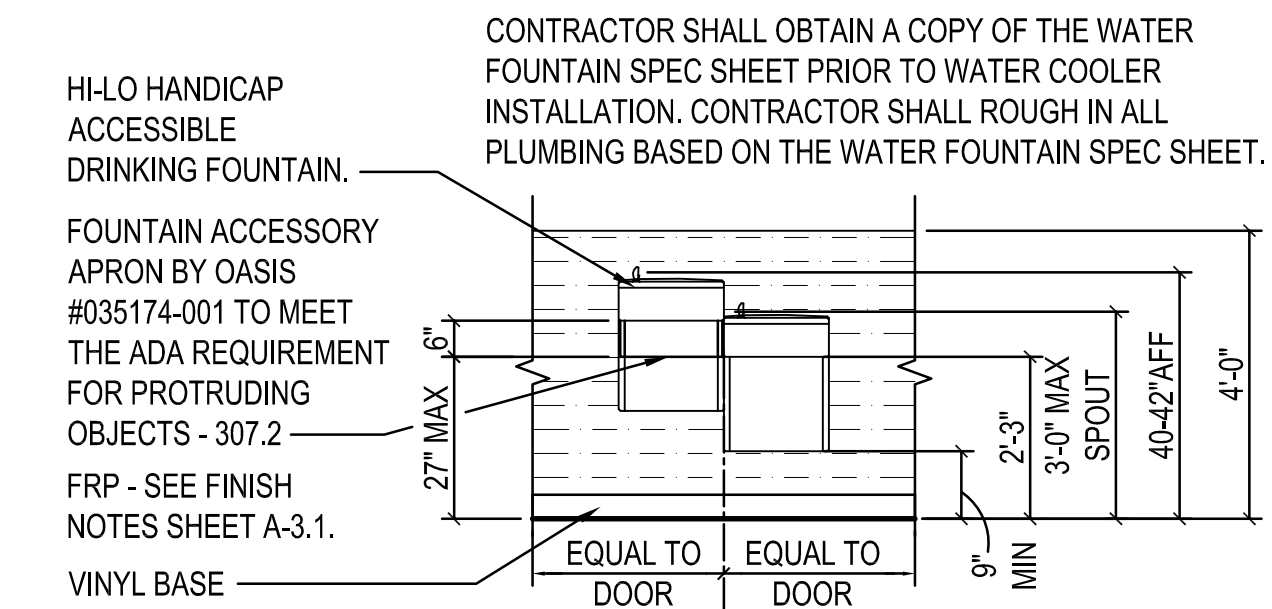
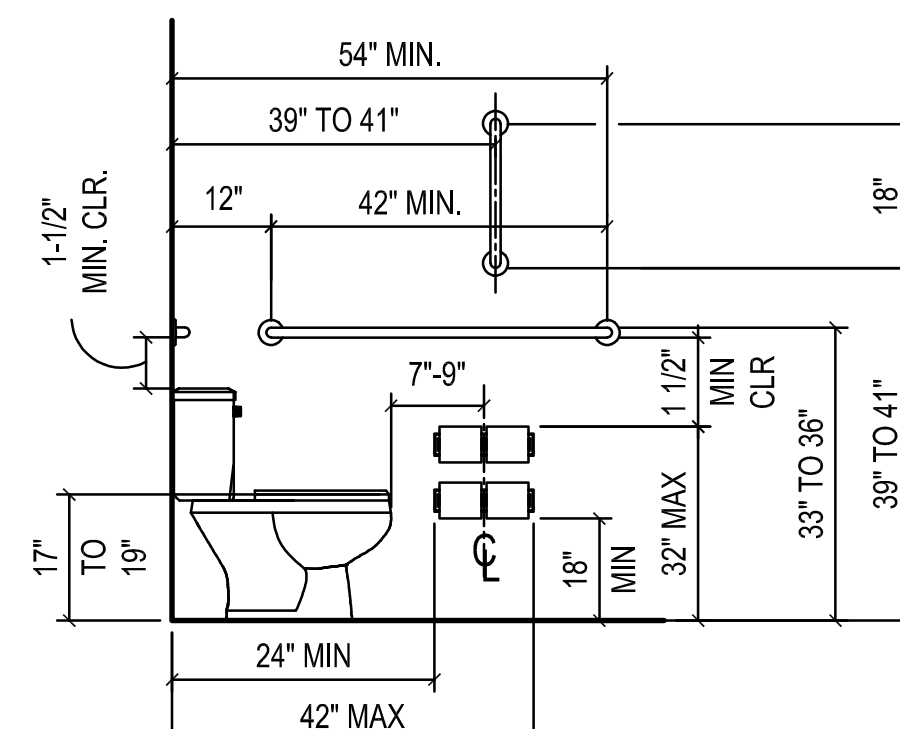
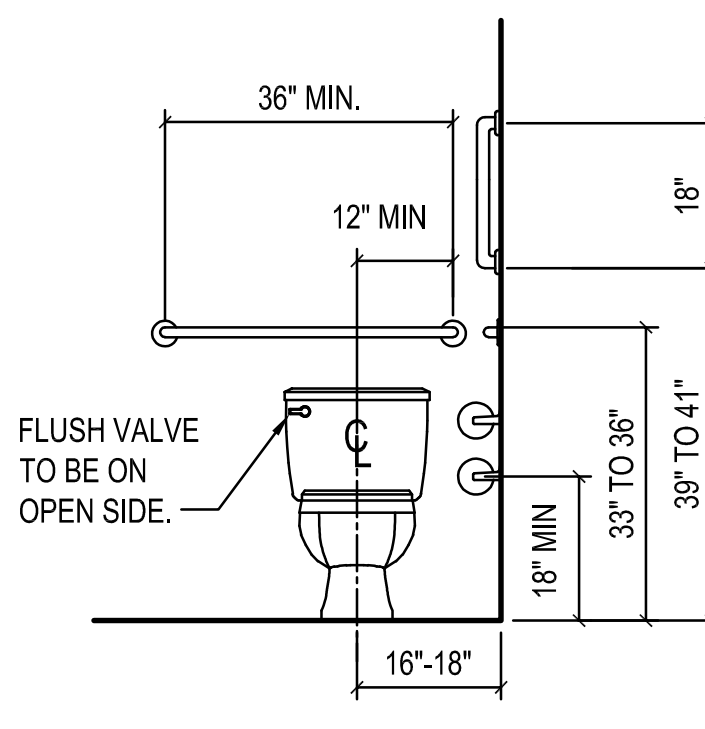
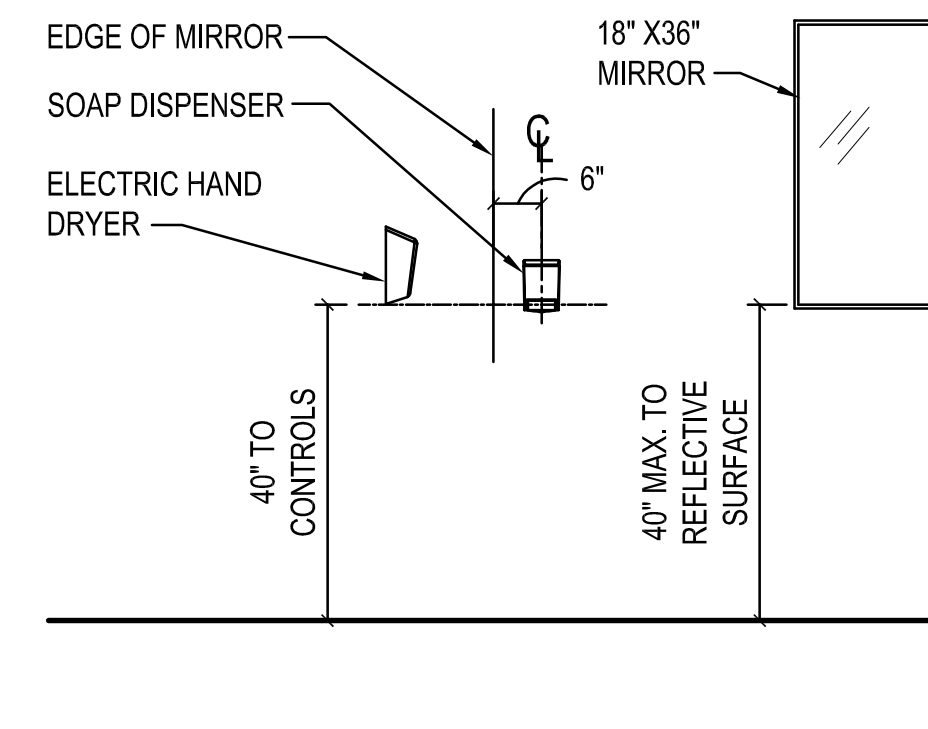
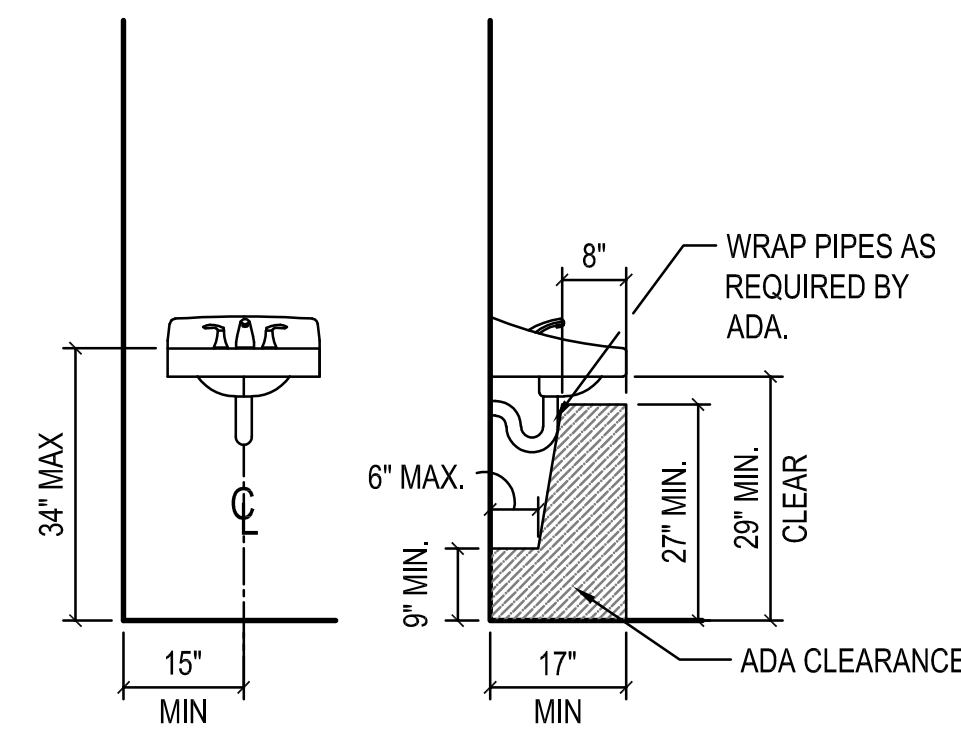
NOTE:

TOILET ACCESSORIES ARE DOLLAR TREE SUPPLIED - INCLUDING GRAB BARS, TOILET PAPER DISPENSER, MIRROR, HAND DRYER, AND SOAP DISPENSER.

THE ELECTRIC HAND DRYER WILL NOT EXTEND MORE THAN 4" FROM THE WALL ON WHICH IT IS MOUNTED UNLESS IT HAS A LEADING EDGE AT OR BELOW 27" ABOVE FINISHED FLOOR.

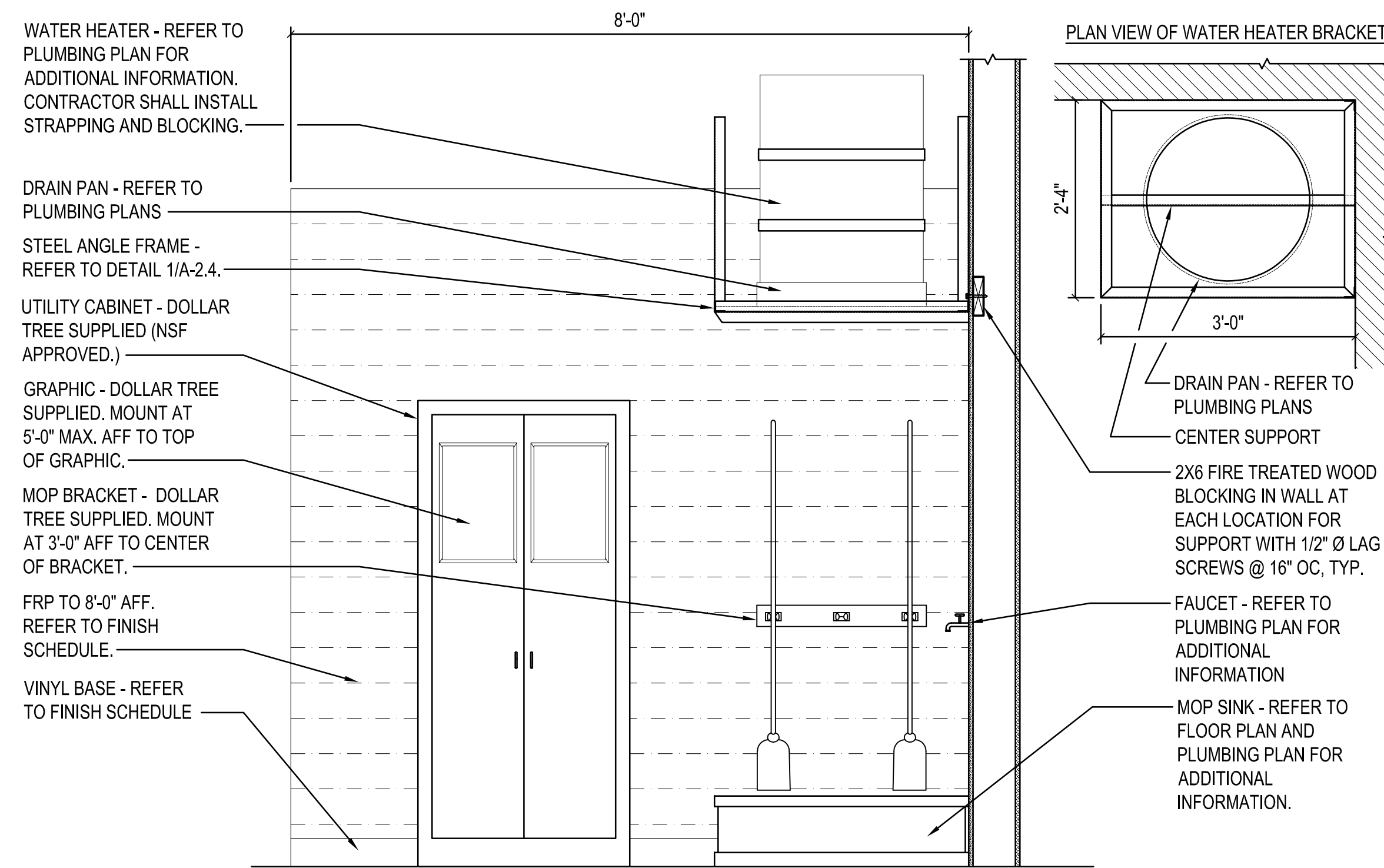
FLUSH CONTROLS SHALL BE LOCATED ON THE OPEN SIDE OF THE WATER CLOSET.

CONTRACTOR SHALL COMPLY WITH PLANS AND HANDICAPPED CODES AND LAWS. CONTRACTOR SHALL VERIFY COMPLIANCE TO FLOOR PLAN, ENLARGED PLANS AND ELEVATIONS THIS SET. NOTIFY CONSTRUCTION PM WITH ANY DISCREPANCIES.

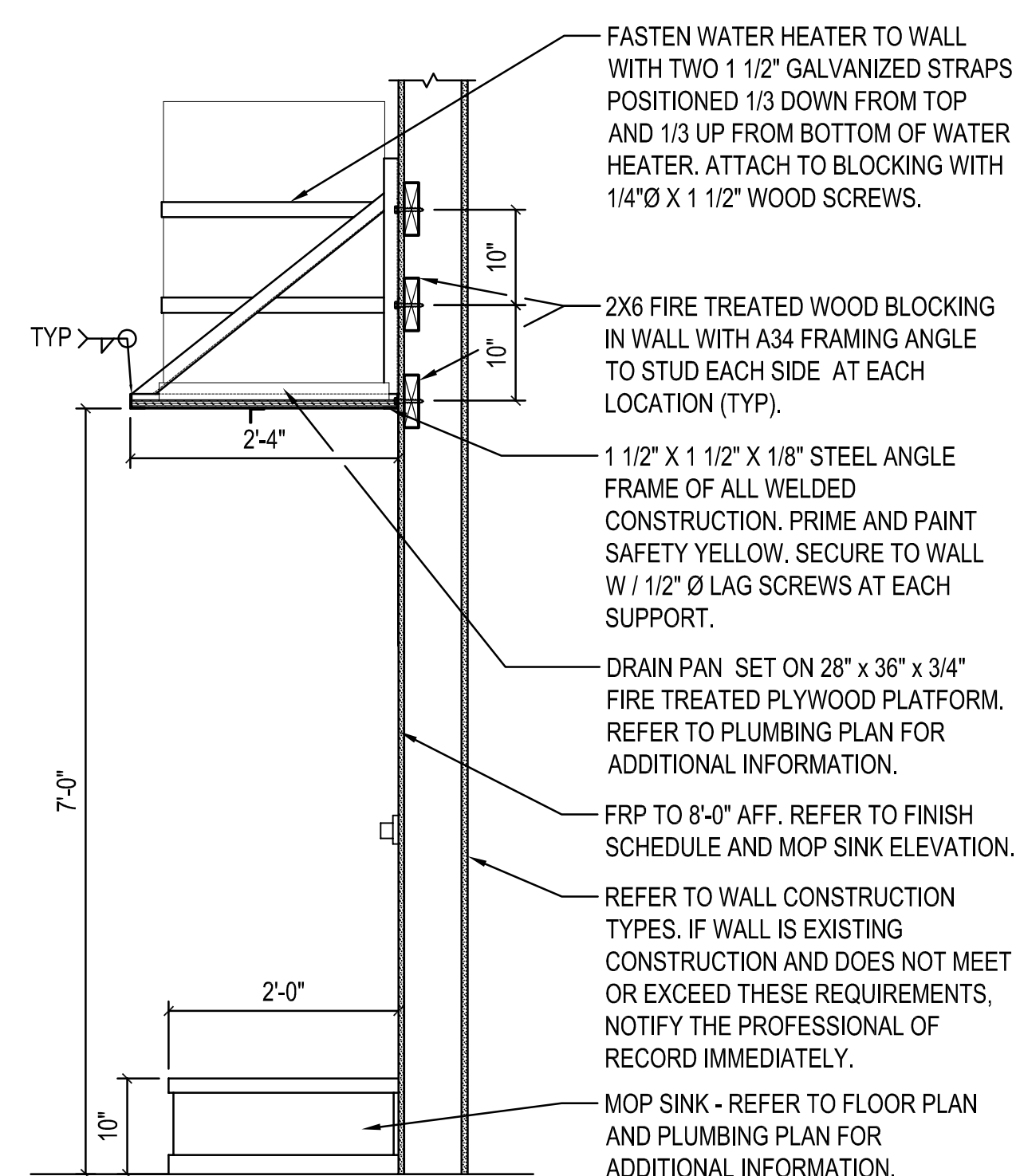


TYPICAL ACCESSIBILITY CLEARANCES
SCALE: 1/2" = 1'-0"

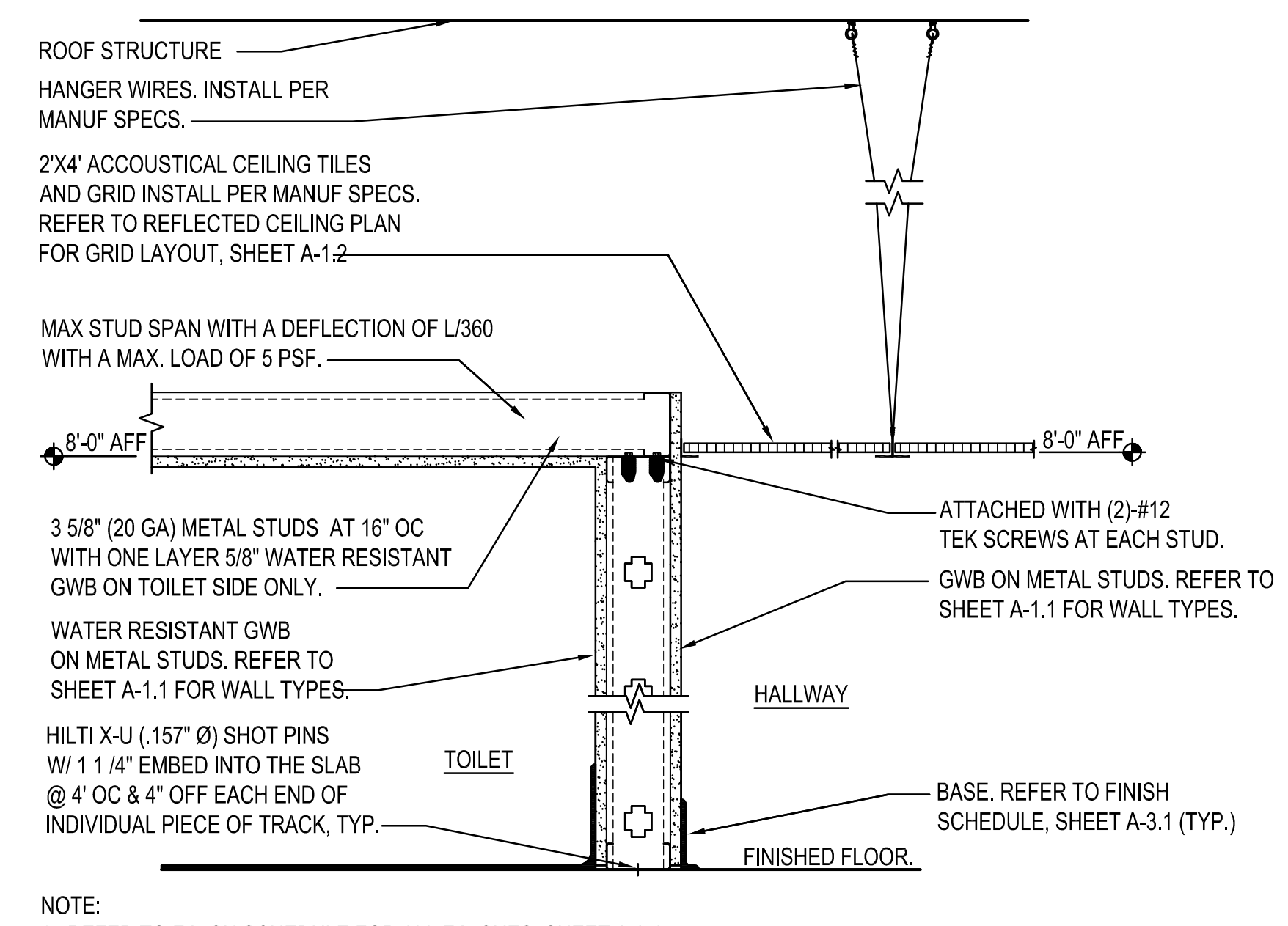
C DRINKING FOUNTAIN ELEVATION
A-2.4 SCALE: 3/8" = 1'-0"



D MOP SINK AND UTILITY CABINET ELEVATION
A-2.4 SCALE: 3/4" = 1'-0"



1 WATER HEATER MOUNTING DETAIL
A-2.4 SCALE: 3/4" = 1'-0"

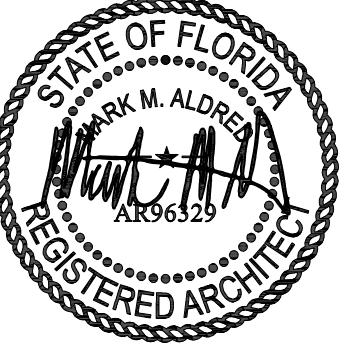


2 CEILING DETAIL @ TOILET / HALLWAY
A-2.4 SCALE: 1 1/2" = 1'-0"

THE NESSEY 4/14/2020 3:57:35 PM H:\2020\20104-00_DOLLAR_TREE\0406\Architectural Sheets\20405A_23-04.dwg

REVISION	DATE	DESCRIPTION

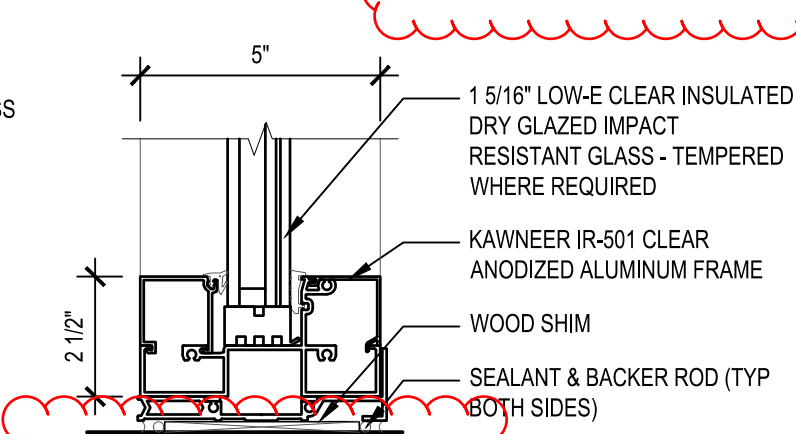
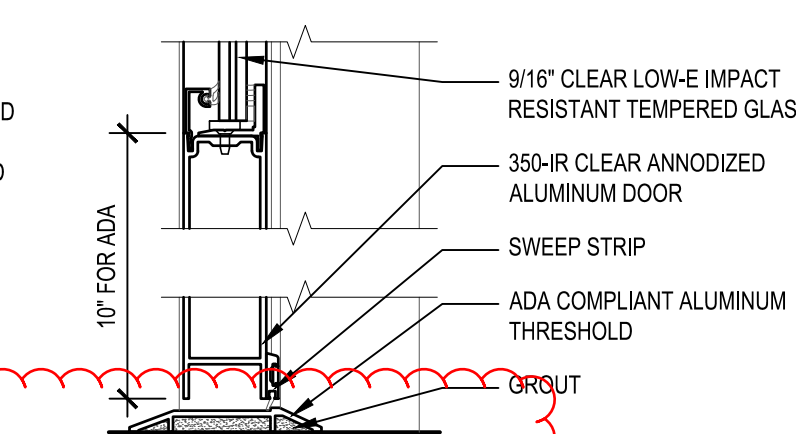
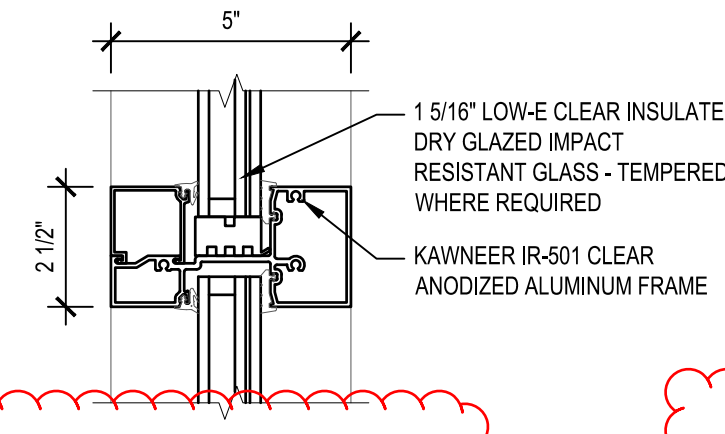
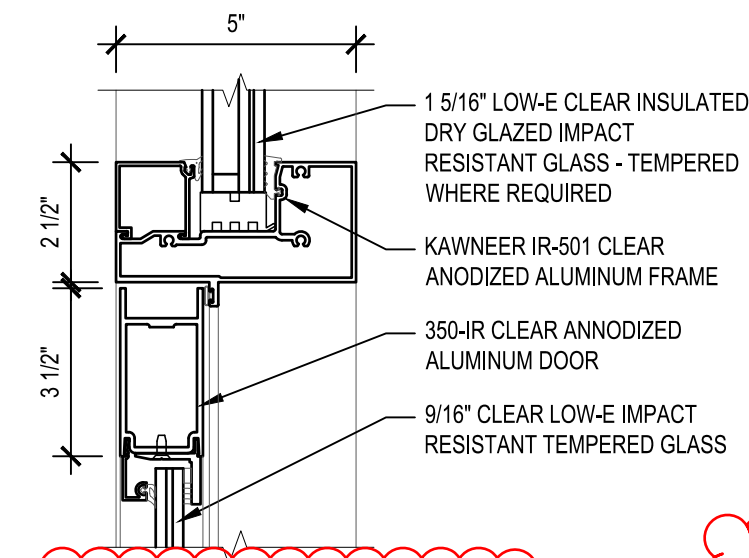
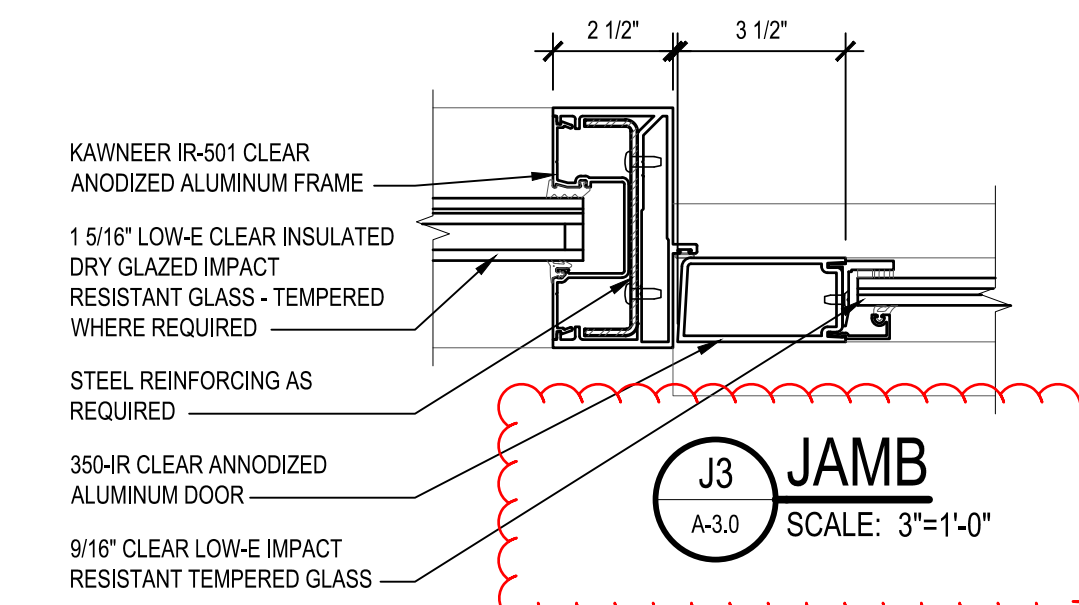
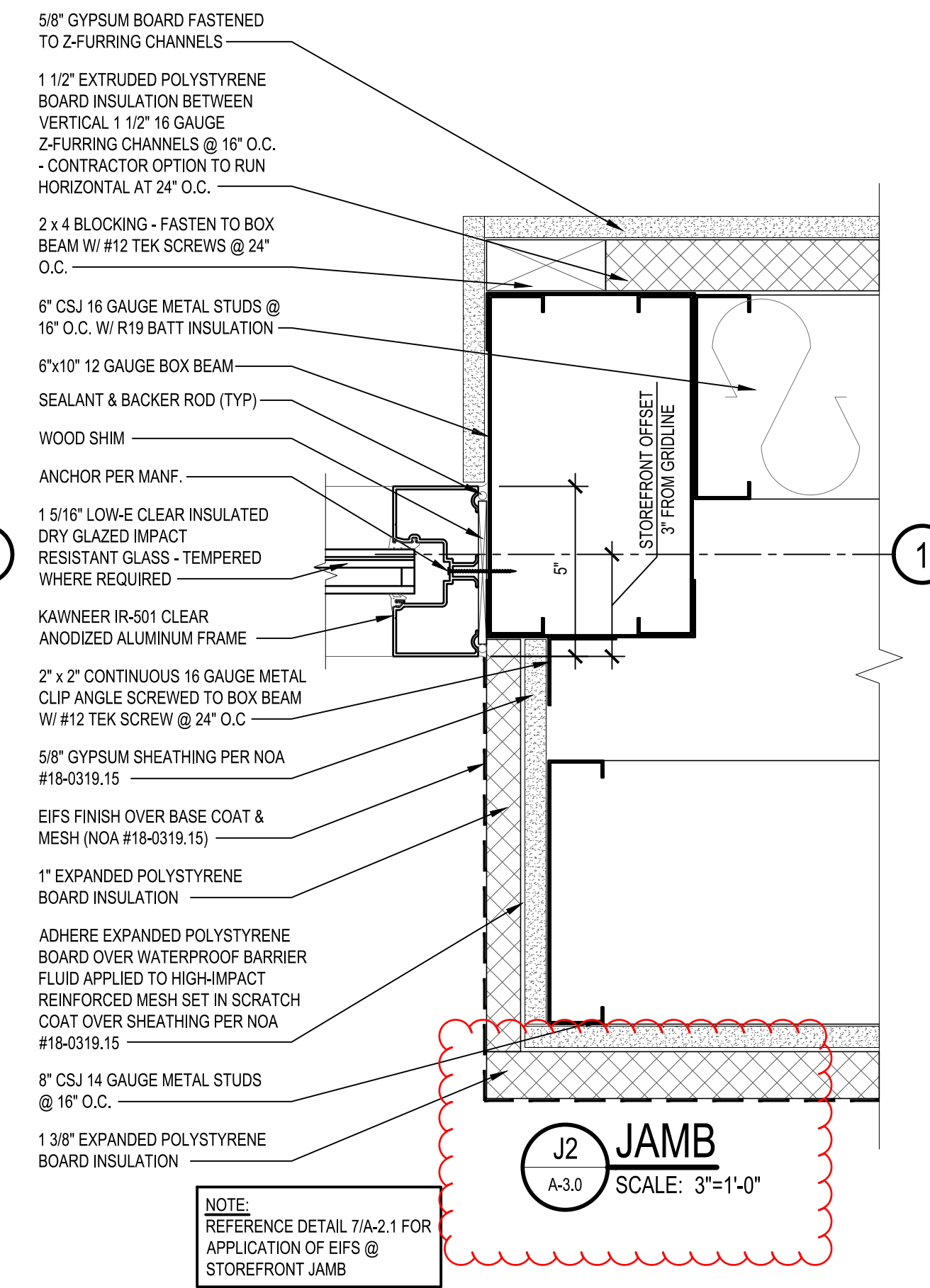
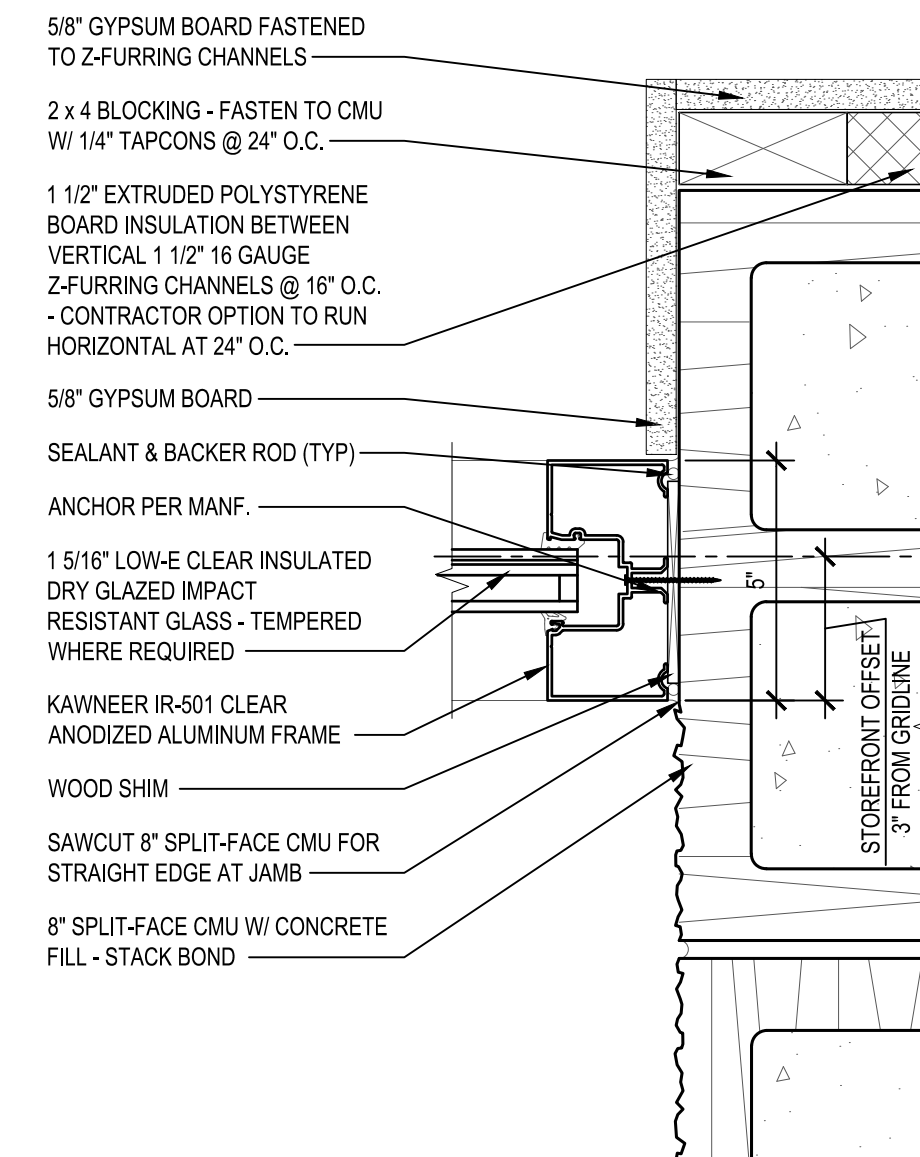
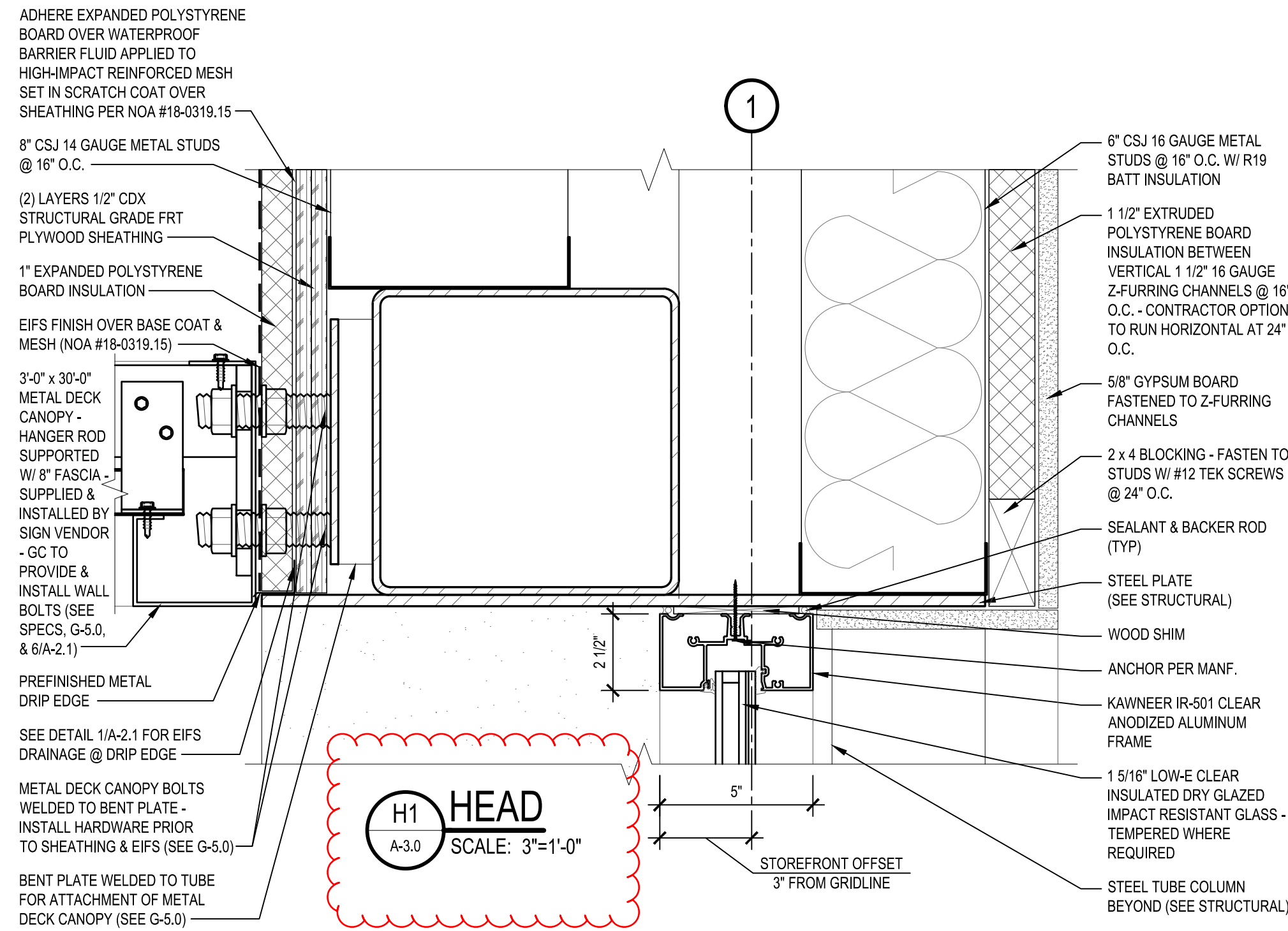
PROJECT NUMBER:	20104-05
DRAWN BY:	TEH
CHECKED BY:	MMA
ISSUE DATE:	04/15/2020
ISSUED FOR BIDS AND PERMITS	



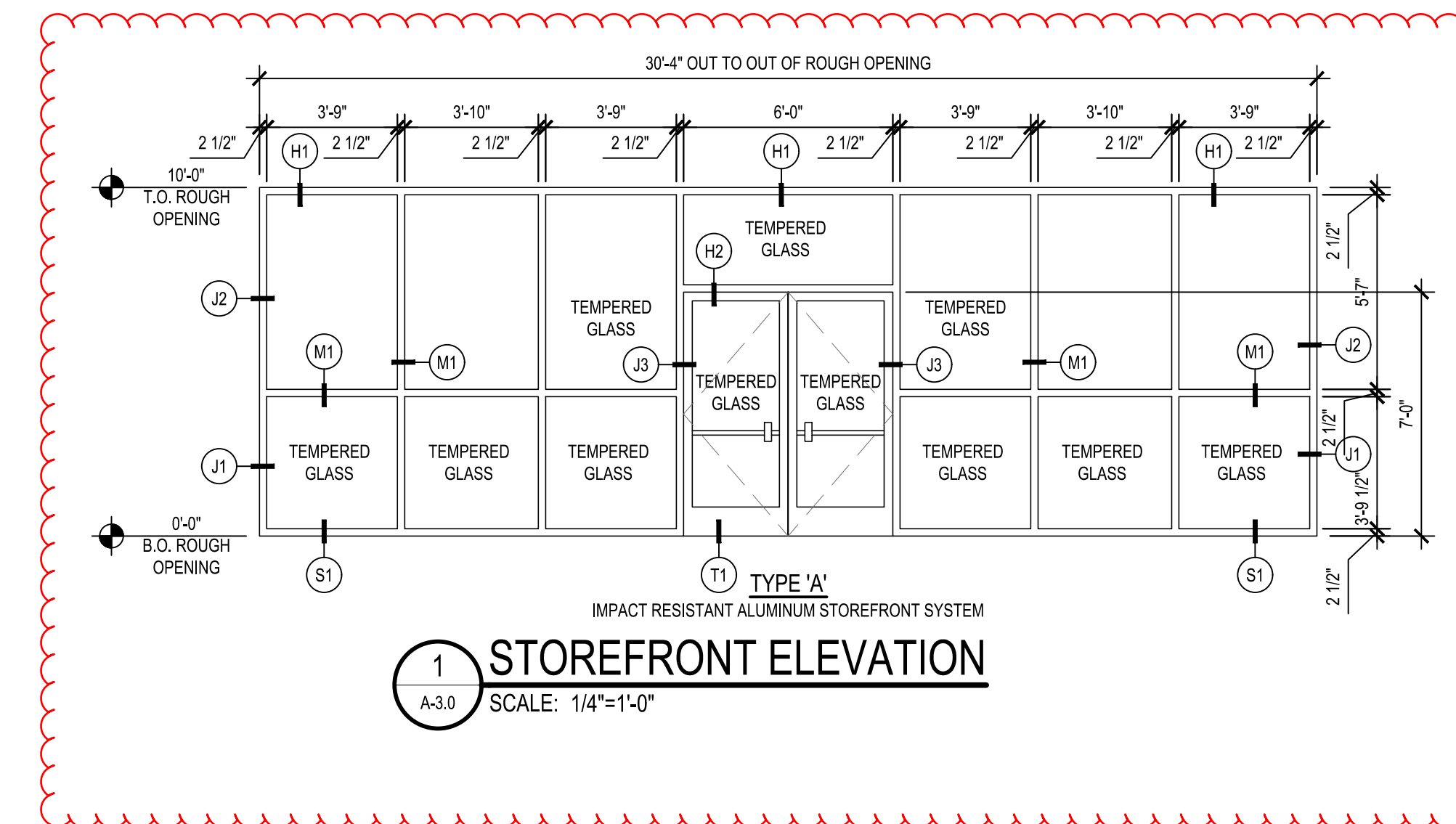
SHEET TITLE:
TOILET ROOM DETAILS & ELEVATIONS

SHEET NUMBER:
A-2.4

LAST SAVED/ALDRED PRINTED BY: MARK ALDRED 4/15/2020 5:42:11 PM I:\1910 dollar tree info\62_marianna_1\A-3.0 Storefront Elevations & Details.dwg

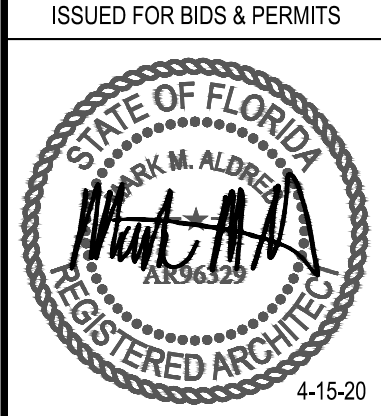


STOREFRONT SCHEDULE				
MARK	QTY.	MANUFACTURER	FINISH	GLASS
A	1	KAWNEER IR-501	CLEAR ANODIZED	1 5/16" DRY GLAZED INSULATED IMPACT RESISTANT W/ LOW-E COATING



REV.	DATE	BY	DESCRIPTION

PROJECT NUMBER:	1910-60
DRAWN BY:	MMA
CHECKED BY:	MMA
ISSUE DATE:	4-15-20



DOOR SCHEDULE

#	DOORS				DOOR	DETAILS			FIRE RATE	HDW NOTES	FRM EL	DOOR NOTES
	W	H	T	MATERIAL		HEAD	JAMB	SILL				
100	3'-0"	6'-8"	1 3/4"	SOLID CORE WD	D	3/A-3.1	3/A-3.1	-	-	100A	D	4
200	PR 3'-0"	7'-0"	1 3/4"	HOLLOW METAL	C	3/A-3.1	3/A-3.1	-	1 HR	200A	E	2,6,8,12,13
300	3'-0"	6'-8"	1 3/4"	SOLID CORE WD	D	1/A-3.1	1/A-3.1	-	-	300C	D	4,5,11
400	PR 3'-0"	7'-0"	1 3/4"	HOLLOW METAL	C	H1/A-2.0	J1/A-2.0	2/A-3.1	-	400A	C	3,4,10
401	3'-0"	7'-0"	1 3/4"	HOLLOW METAL	B	H1/A-2.0	J1/A-2.0	2/A-3.1	-	400C	B	3,4,7,10
500	PR 3'-0"	7'-0"	1 3/4"	STOREFRONT	A	H2/A-3.0	J3/A-3.0	T1/A-3.0	-	500A	A	1,9,10

DOOR NOTES

- PROVIDE A SIGN POSTED ON THE EGRESS SIDE, ON OR ADJACENT TO THE DOOR STATING: "THIS DOOR TO REMAIN UNLOCKED WHEN BUILDING IS OCCUPIED." THE SIGN SHALL BE IN LETTERS 1" HIGH ON A CONTRASTING BACKGROUND.
- NEW DOORS - SUPPLIED BY DOLLAR TREE W/ PRE-INSTALLED BRUSHED ALUM COVER PLATE ON SALES AREA SIDE OF THE DOOR.
- PROVIDE (ONE) PEEP HOLE TO VIEW OUT. MOUNT @ 4'-3" AFF.
- PAINT DOOR AND FRAME W/ WHITE SEMI-GLOSS ENAMEL PAINT. FOR DOORS 400 & 401 PAINT INTERIOR WHITE AND SEE SHEET A-2.0 FOR EXTERIOR COLOR.
- INSTALL DOLLAR TREE SUPPLIED SIGNAGE PER DETAIL A/A-3.1.
- REINFORCE JAMBS WITH WOOD BLOCKING.
- PROVIDE SIGNAGE THAT READS "EMERGENCY EXIT ONLY."
- PROVIDE SIGNAGE THAT READS "EMPLOYEES ONLY."
- PROVIDE HANDICAPPED ACCESSIBILITY DECAL. SEE DETAIL A/A-2.6.
- CONTRACTOR TO PROVIDE AND INSTALL DOOR SWEEP ON ALL EXTERIOR DOORS TO PREVENT WATER, WIND AND DEBRIS INFILTRATION.
- PROVIDE COAT HOOK AT 48" AFF. ON BACK SIDE OF DOOR.
- PAINT DOOR FRAME WHITE WITH SEMI-GLOSS ENAMEL PAINT. DOOR TO REMAIN WITH ORIGINAL FINISH.
- PROVIDE "C" LABEL DOOR AND FRAME PER UNDERWRITER'S LABORATORIES INC.

GENERAL HARDWARE NOTES:

- THRESHOLDS AT EGRESS DOORS SHALL BE NO MORE THAN 1/2" (MAX) HEIGHT AFF.
- ALL DOOR HANDLES, PULLS, LATCHES, LOCKS AND OTHER OPERATING DEVICES SHALL BE INSTALLED 34" (MIN) TO 48" (MAX) AFF AND SHALL BE "SINGLE-HANDED" OPERABLE WITHOUT USE OF KEY OR SPECIAL KNOWLEDGE.
- WHERE EGRESS DOORS ARE USED IN PAIRS, THE UNLATCHING OF THE LEAF SHALL NOT REQUIRE MORE THAN ONE (1) OPERATION AS MENTIONED IN GENERAL HARDWARE NOTE #2 ABOVE.
- CONTROLS AND OPERATING MECHANISMS SHALL BE LEVER-TYPE (OR EQUAL) PROVIDING OPERATION WITH ONE HAND AND NOT REQUIRE TIGHT GRASPING, PINCHING, OR TWISTING OF THE WRIST.
- THE FORCE REQUIRED TO ACTIVATE CONTROLS OF INTERIOR HINGED DOORS SHALL BE NO GREATER THAN 5 POUNDS (22.2 N).
- DOORS EQUIPPED WITH CLOSERS SHALL BE ADJUSTED SO THAT THE SWEEP PERIOD FROM AN OPEN POSITION OF 70 DEGREES WILL TAKE AT LEAST 3 SECONDS TO MOVE TO A POINT 3" FROM THE LATCH, MEASURED FROM THE LEADING EDGE OF THE DOOR.
- REQUIRED EXIT DOORS SHALL BE OPENABLE FROM THE INSIDE WITHOUT THE USE OF A KEY, TOOL, SPECIAL KNOWLEDGE OR EFFORT. MANUALLY OPERATED FLUSH BOLTS ARE PROHIBITED. ALL HARDWARE MUST BE DIRECT ACTING REQUIRING NO MORE THAN ONE OPERATION. DOUBLE CYLINDER DEAD BOLTS, REQUIRING A KEY FOR OPERATION ON BOTH SIDE, ARE PROHIBITED ON REQUIRED MEANS OF EGRESS DOORS UNLESS THE LOCKING DEVICE IS PROVIDED WITH A KEY WHICH CANNOT BE REMOVED WHEN THE DOOR IS LOCKED FROM THE INSIDE.

HARDWARE NOTES

- HDW # 100A**
 1 1/2 PAIR HINGES: STANDARD WEIGHT
 1 MECHANICAL PUSH BUTTON LOCKSET WITH LEVER HANDLE
 1 CLOSER
 1 FLOOR STOP
- HDW # 200A**
 3 PAIR HINGES: 4 1/2" HEAVY WEIGHT, BALL BEARING PINS
 2 CLOSERS
 1 COORDINATOR
 1 PUSH - PULL LATCH SET
 1 SET AUTOMATIC FLUSH BOLTS (ON INACTIVE LEAF)
 1 DUSTPROOF STRIKE
 1 STEEL ASTRAGAL
 1 THRESHOLD (1/4" MAXIMUM HEIGHT)
 1 SMOKE SEAL
- HDW # 300C**
 1 1/2 PAIR HINGES: STANDARD WEIGHT
 1 PRIVACY SET WITH LEVER HANDLE
 1 CLOSER
 (FLOOR/WALL STOP IF SHIPPED WITH HARDWARE)
- HDW # 400A**
 3 PAIR HINGES: 4 1/2" HEAVY WEIGHT, NON-REMOVABLE PINS
 1 NON-ALARMED, NON-KEYED PANIC BAR DEVICE: WITH STAND ALONE ALARM REFER TO DOOR ALARM MOUNTING DETAIL
 2 OVERHEAD HOLDERS/STOPS (MAX 90°)
 2 FLUSH BOLTS (ON INACTIVE LEAF)
 1 DUST PROOF STRIKE
 1 PEEP HOLE
 1 ALUM THRESHOLD (1/2" MAX HEIGHT)
 2 SWEEPS
 1 WEATHER STRIP
 1 RAIN DRIP
 1 DOOR STOP
 1 ASTRAGAL
- HDW # 400C**
 1 1/2 PAIR HINGES: STANDARD WEIGHT, NON-REMOVABLE PINS
 1 NON-ALARMED, NON-KEYED PANIC BAR DEVICE: WITH STAND ALONE ALARM REFER TO DOOR ALARM MOUNTING DETAIL
 1 CLOSER WITH STOP ARM
 1 PEEP HOLE
 1 ALUM THRESHOLD (1/2" MAX HEIGHT)
 1 SWEEP
 1 WEATHER STRIP
 1 RAIN DRIP

HDW # 500A
 HINGES PER STOREFRONT MANUFACTURER (BY GENERAL CONTRACTOR)
 2 CLOSERS WITH STOP ARM AND DROP PLATE
 2 PUSH PLATES (BY GENERAL CONTRACTOR)
 2 PULL HANDLES (BY GENERAL CONTRACTOR)
 1 KABA CYLINDER (SUPPLIED BY DOLLAR TREE)
 1 COMMERCIAL GRADE DEADLOCK W/ THUMB TURN ON SALES SIDE (SUPPLIED BY GENERAL CONTRACTOR)
 INACTIVE LEAF - KAWNEER CONTROLLER 2 POINT LOCKING SYSTEM

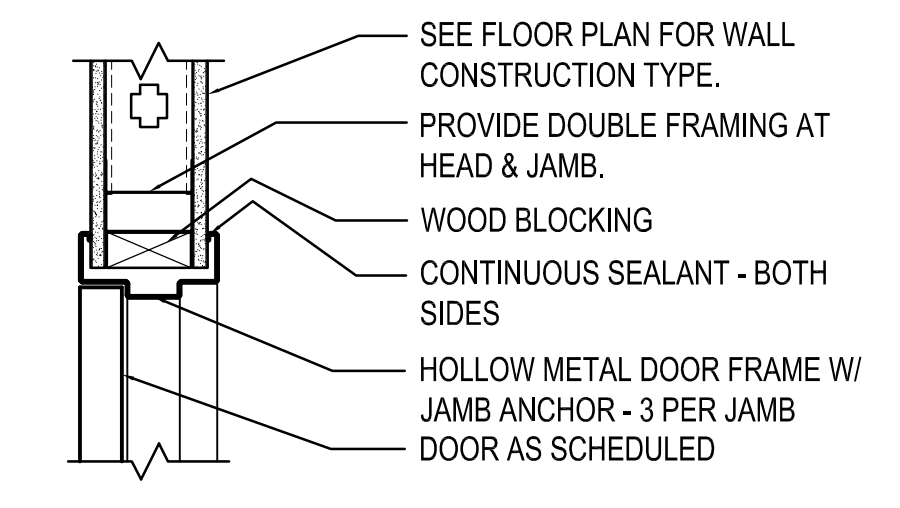
NOTE: CONTRACTOR SHALL VERIFY CLOSER DOES NOT HAVE A HOLD-OPEN FEATURE. IF CLOSER DOES, THE CONTRACTOR SHALL REPLACE WITH NEW CLOSER.

FINISH SCHEDULE

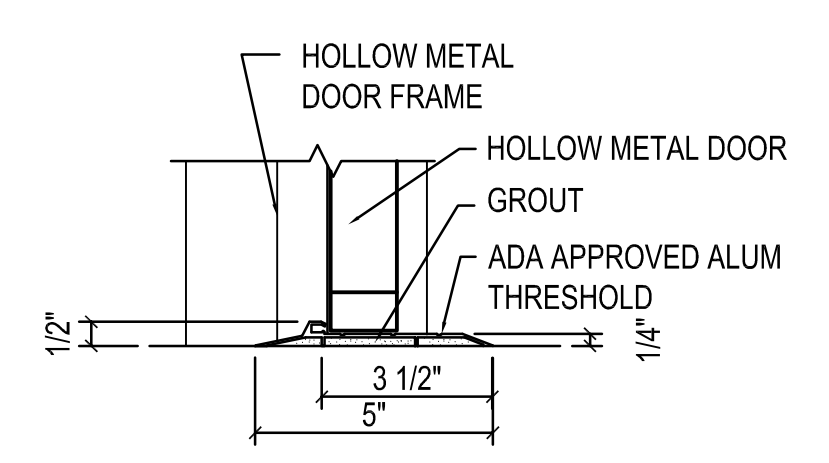
SPACES	FLOORS	BASES	WALLS	CEILING	NOTES
SALES	POLISHED CONCRETE ENTRY CARPET TILE	4" VINYL	GWB-PAINT YELLOW / FRP	ACT	1,2,3,4,5,7,9,11,13
STOCKROOM	CONCRETE	4" VINYL	GWB	--	2,9,14
EMPLOYEE AREA	CONCRETE	-	GWB / PLYWOOD	--	5,12
OFFICE	POLISHED CONCRETE	4" VINYL	GWB-PAINT WHITE	--	2,3,4,5,7,8
TOILET	SHEET VINYL	6" SHEET VINYL	FRP	GWB-PAINT WHITE	4,5,6,7,9,10
HALLWAY	POLISHED CONCRETE	4" VINYL	GWB-PAINT WHITE / FRP	ACT	2,3,5,9,11

FINISH NOTES

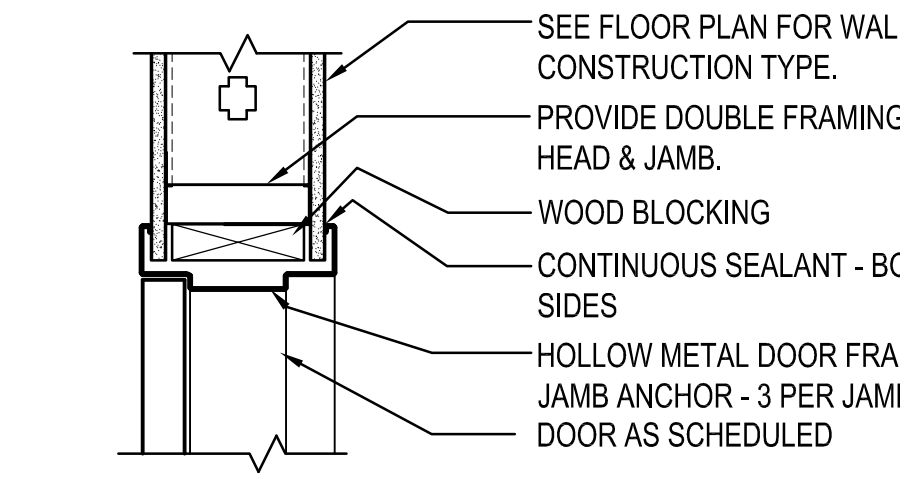
- CARPET TILE: MANUFACTURED BY INTERFACE FLOORING SYSTEMS AND SUPPLIED BY DOLLAR TREE. INSTALL TILES QUARTER TURNED AND PER DOLLAR TREE'S CRITERIA. ENTRY TILE: DECO RIB, STYLE #678609900. CONTRACTOR SHALL PREPARE FLOOR SURFACE AND COORDINATE CARPET INSTALLATION W/ CARPET INSTALLER.
- VINYL COVE BASE: COLOR - BLACK. (VINYL BASE ONLY ON EXPOSED WALLS NOT COVERED BY GONDOLAS IN SALES AREA.) VINYL COVE BASE TO BE LOCATED IN STOCKROOM AT MOP SINK AND CABINET ONLY UON.
- POLISHED CONCRETE FLOOR ON SALES FLOOR AND OFFICE. POLISHED CONCRETE FLOOR BY DOLLAR TREE'S VENDOR. COORDINATE WITH DOLLAR TREE.
- SLATWALL: 3/4" SLATWALL WITH WHITE MELAMINE FINISH. SEE MANUFACTURER'S DRAWINGS FOR INSTALLATION DETAILS.
- PAINT COLORS ARE AS FOLLOWS:
 WHITE - SHERWIN WILLIAMS PRO 200 LATEX SEMI-GLOSS WHITE W/ B-1 PER GALLON.
 YELLOW - BENJAMIN MOORE PRODUCT 274 "LEMON SORBET" #2019-60 (EGGSHELL FINISH)
 FOREST GREEN - BENJAMIN MOORE PRODUCT 274 "FOREST GREEN" #2047-10 (EGGSHELL FINISH)
 GRAY - "ROCKY RIVER" #SW6215 SHERWIN WILLIAMS (SEMI GLOSS)
- PAINT TOILET ROOM EXTERIOR WALLS WHITE.
- SLATWALL SHALL BE PROVIDED BY DOLLAR TREE AND INSTALLED BY CONTRACTOR. ALL OTHER FINISHES SHALL BE PROVIDED AND INSTALLED BY CONTRACTOR.
- PROVIDE PREFORMED COUNTER WITH WHITE HIGH PRESSURE LAMINATE FINISH. MOUNT TO WALLS. FILING CABINETS PROVIDED BY DOLLAR TREE. SEE ENLARGED OFFICE PLAN AND OFFICE ELEVATION.
- F R P (FIBERGLASS REINFORCED PANEL): IN TOILET ROOM FROM 6 1/2" AFF TO 8'-0" AFF SHALL BE WHITE" COLOR (IN STOCKROOM BEHIND MOP SINK / UTILITY CABINET ONLY. IN HALLWAY BEHIND DRINKING FOUNTAIN ONLY FRP GOES FROM FINISHED FLOOR.) FRP ON SALES FLOOR (WHERE NOTED ON PLANS/ELEVATIONS) SHALL BE ALMOND COLOR WITH "J" CHANNEL TRIM CAP AND "H" CHANNEL PANEL CONNECTORS.
- SHEET VINYL: CLASSIC CORLON SERIES MANUFACTURED BY ARMSTRONG - CONNECTION CORLON "PORCELAIN" #88724 OR EQUAL. SHEET VINYL BASE: BY INTREGAL, 3/8" RADIUS, 6" HIGH COVED BASE W/ COVE STICK AND EXTRUDED ALUMINUM CAP TRIM.
- PROVIDE 2'-0" X 4'-0" CEILING TILE BY ARMSTRONG "CORTEGA" SQUARE LAY- IN #769, WHITE, IN A WHITE METAL GRID. (IN AREAS WITH SIGNIFICANT AIR PRESSURE DIFFERENTIALS PROVIDE RETENTION CLIPS TO RETAIN PANELS IN PLACE.)
- PAINT EMPLOYEE AREA WALLS TO 4'-0" AFF "FOREST GREEN".
- SALES AREA TO RECEIVE LEVEL 5 FINISH. PROVIDE FINISH TO 1'-0" BEHIND FREEZER / COOLER AND GONDOLA, TO FINISHED FLOOR EVERYWHERE ELSE. CONTRACTOR SHALL ALLOW 72 HOUR CURE TIME.
- PAINT 6" WIDE BAND ON CONCRETE FLOOR AROUND PERIMETER OF STOCKROOM WITH 2 COATS BENJAMIN MOORE "FD BM WHITE" TOUGH SHIELD ACRYLIC GLOSS TY-43. PAINT BAND PRIOR TO PAINTING ANY YELLOW CLEAR FLOOR SPACE AREAS.



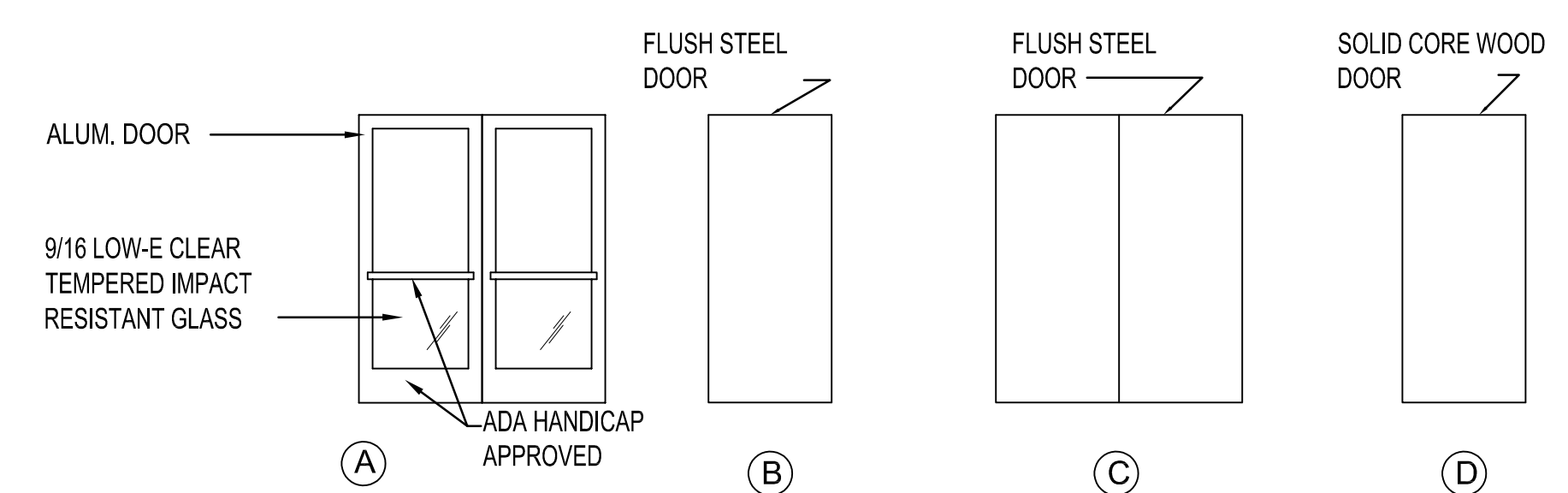
1 HEAD / JAMB DETAIL
 A-3.1 SCALE: 1 1/2" = 1'-0"



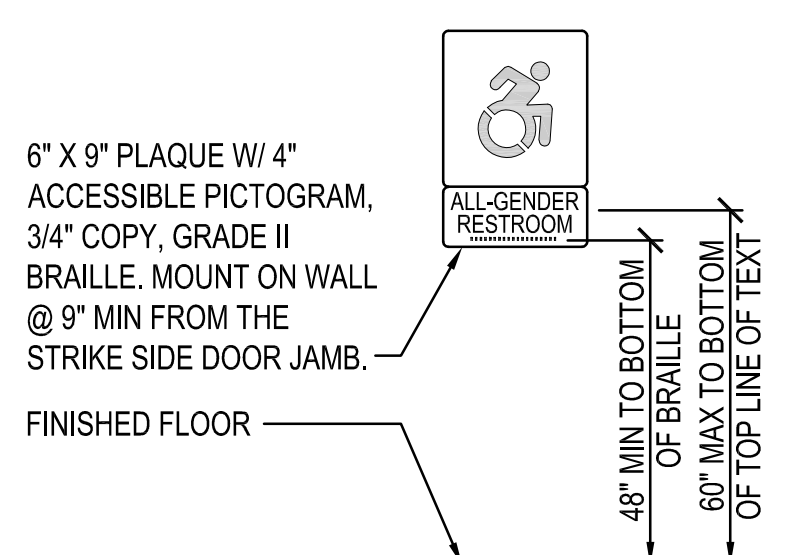
2 THRESHOLD
 A-3.1 SCALE: 3" = 1'-0"



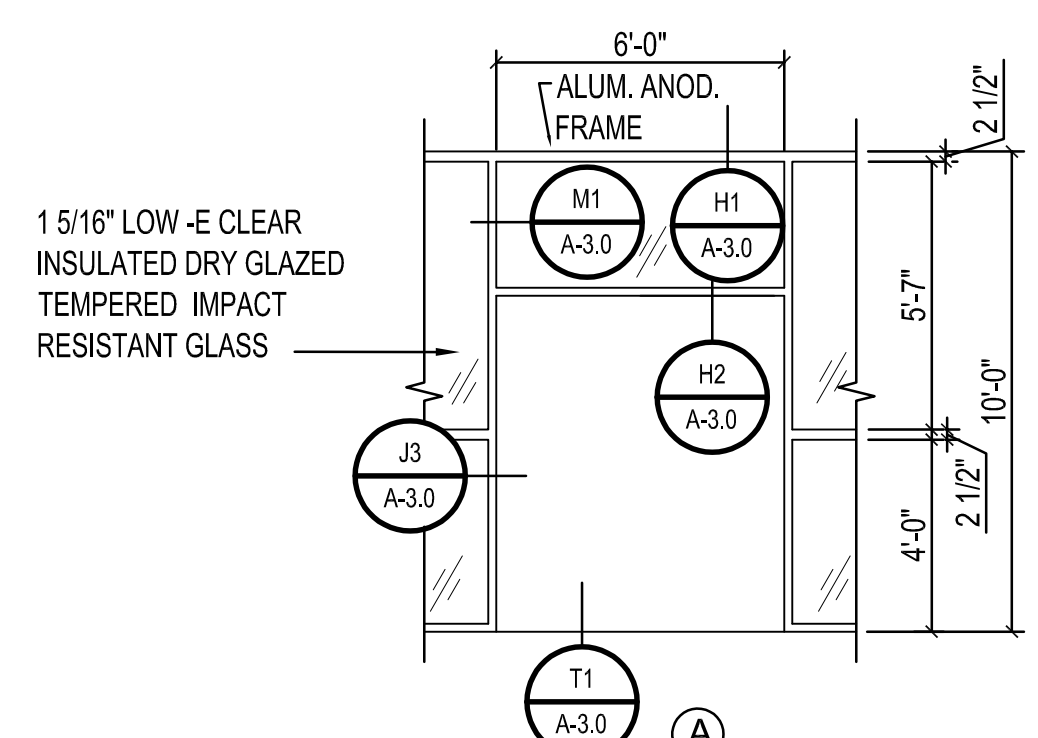
3 HEAD / JAMB DETAIL
 A-3.1 SCALE: 1 1/2" = 1'-0"



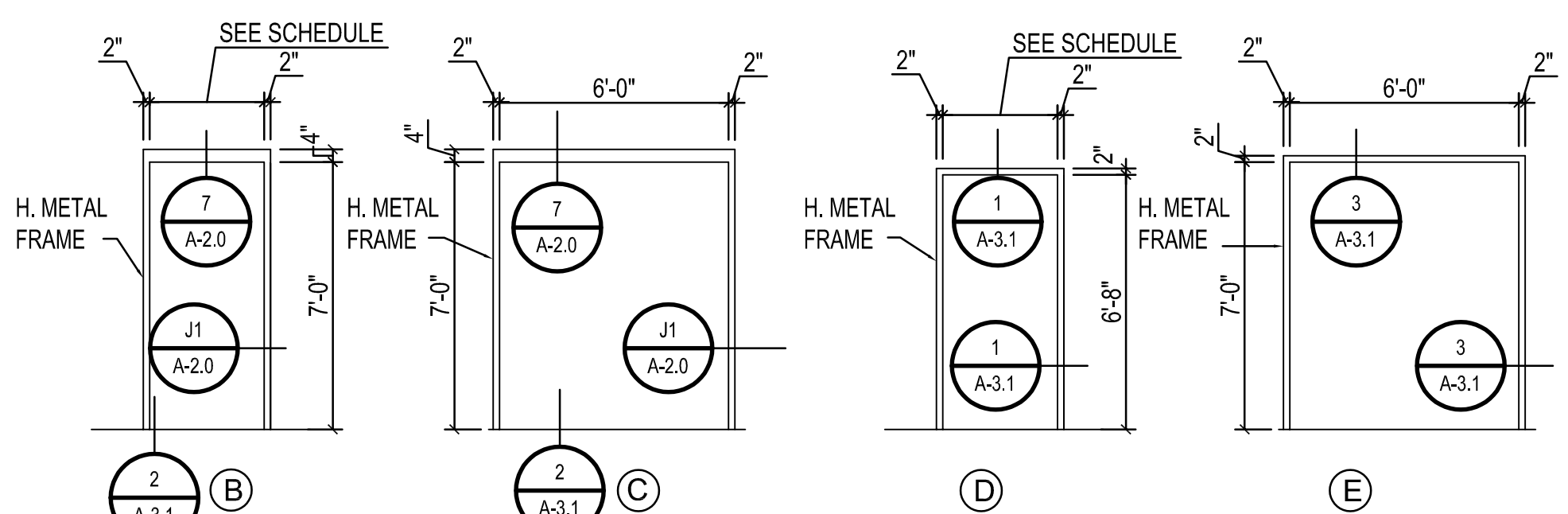
DOOR ELEVATIONS
 SCALE: 1/4" = 1'-0"



A SIGNAGE ELEVATIONS
 A-3.1 SCALE: NTS



DOOR FRAME ELEVATIONS
 SCALE: 1/4" = 1'-0"



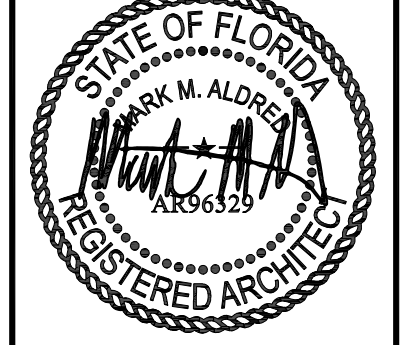
THEINNESSY 4/14/2020 3:57:52 PM H:\2020\20104-00_DOLLAR_TREE\0400\Architectural\Sheets\20104_00_31.dwg

CLARK | GEE | LATHAM
 AND ASSOCIATES, INC.
 3901 SPRING HILL AVENUE | MOBILE, AL 36608 | 251.344.7073

DOLLAR TREE
 MARIANNA, FLORIDA

REV	DATE	BY	DESCRIPTION

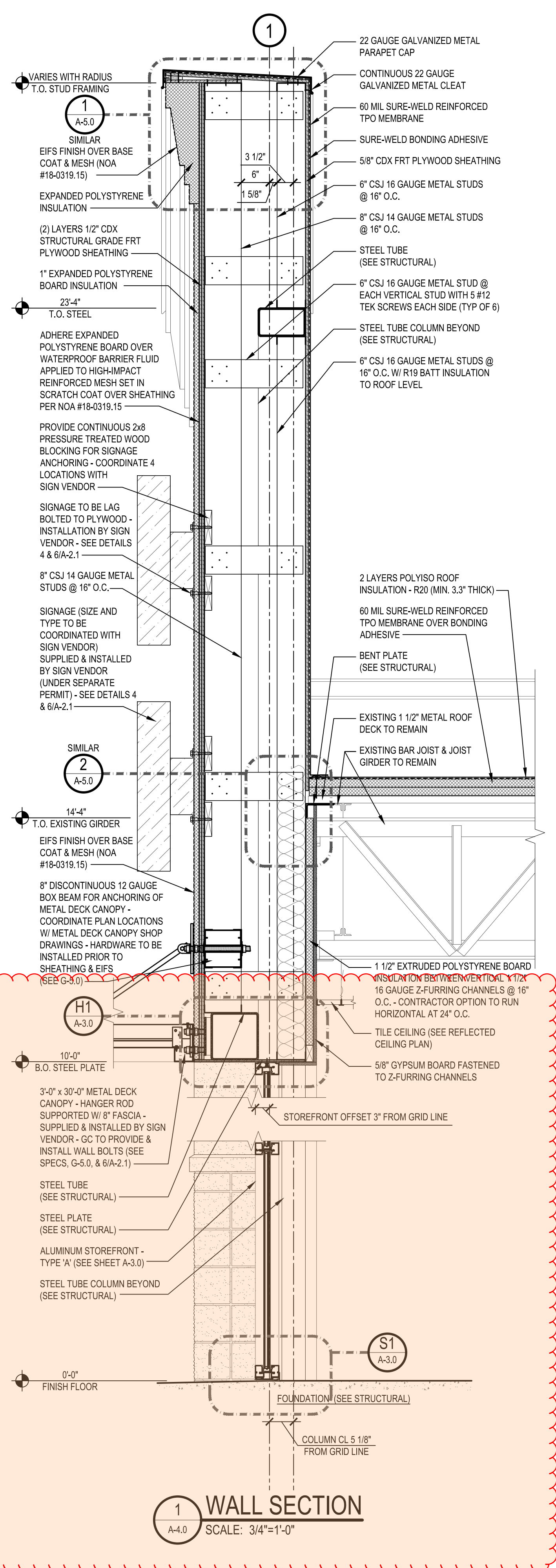
PROJECT NUMBER:	20104-05
DRAWN BY:	TEH
CHECKED BY:	MMA
ISSUE DATE:	04/15/2020
ISSUED FOR BIDS AND PERMITS	



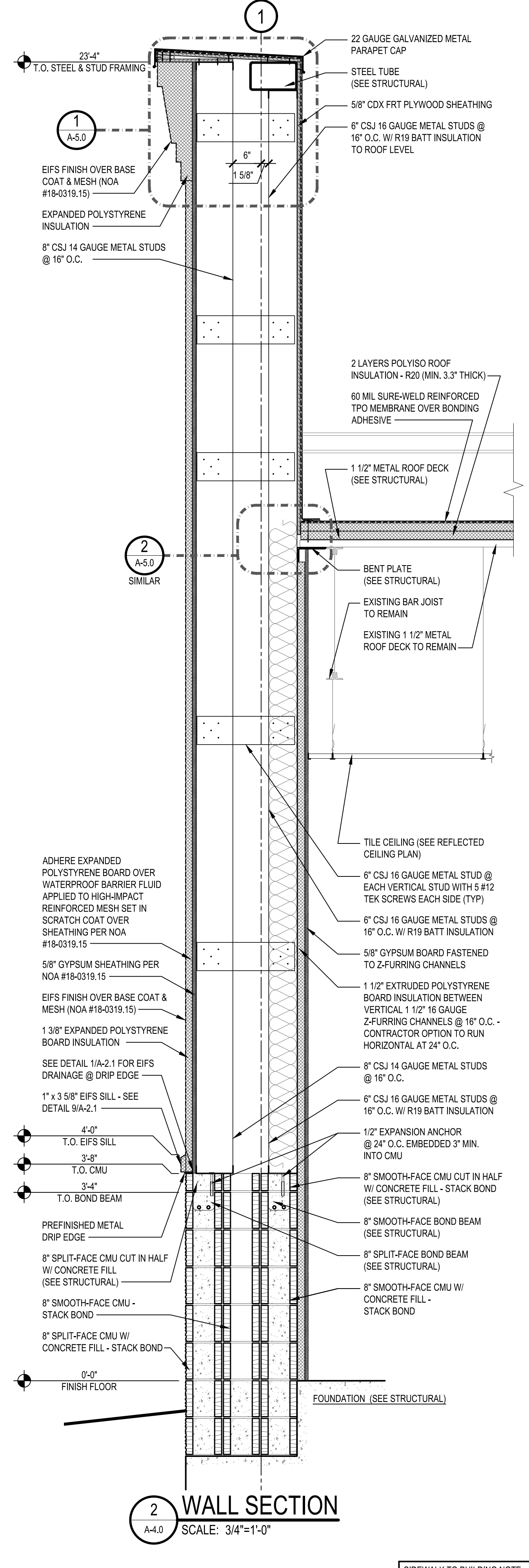
SHEET TITLE:
 INTERIOR DOOR & FINISH SCHEDULE & DETAILS

SHEET NUMBER:
A-3.1

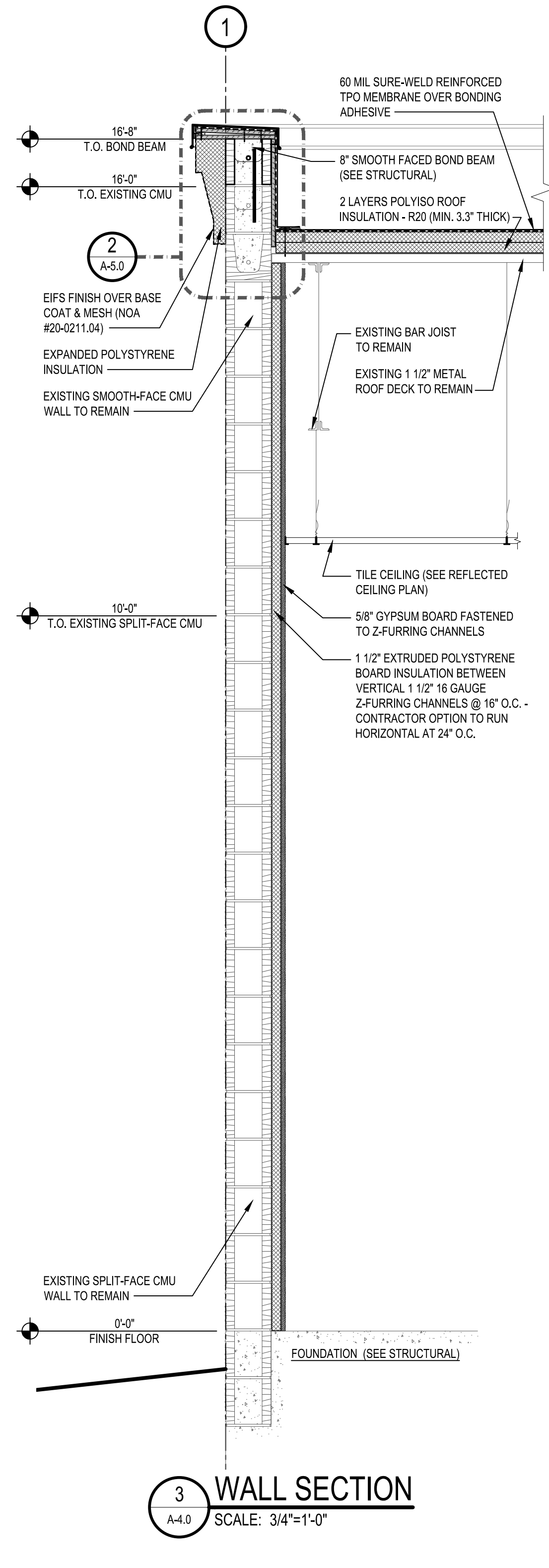
LAST SAVED/ALIGNED PRINTED BY: MARK ALDRED 4/15/2020 5:42:53 PM I:\1910 dollar tree in-fill\02_marianna_rfa\A-4.0 Wall Sections.dwg



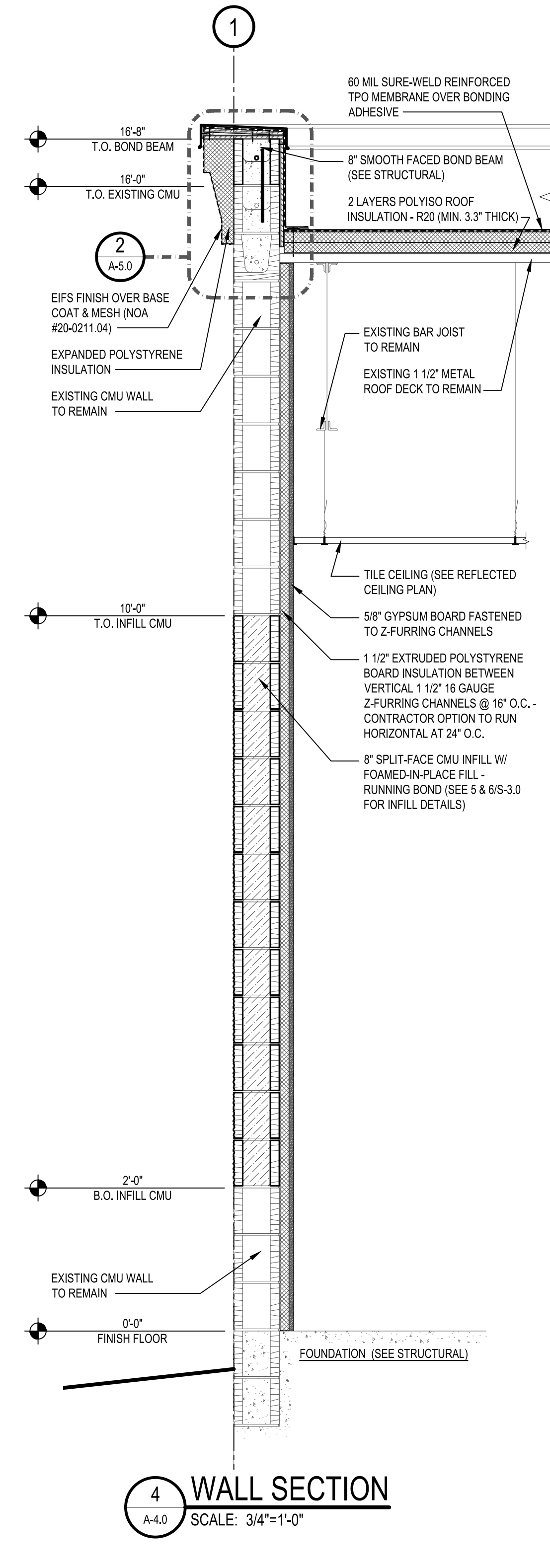
1 WALL SECTION
SCALE: 3/4"=1'-0"



2 WALL SECTION
SCALE: 3/4"=1'-0"



3 WALL SECTION
SCALE: 3/4"=1'-0"

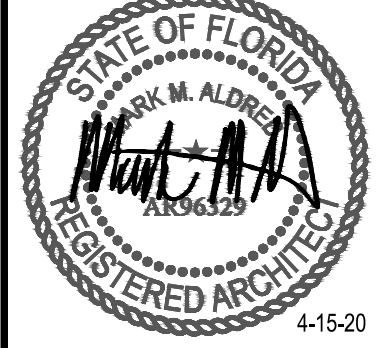


4 WALL SECTION
SCALE: 3/4"=1'-0"

SIDEWALK TO BUILDING NOTE:
WHERE SIDEWALKS ABUTT THE BUILDING, PROVIDE A 1/4" ASPHALTIC EXPANSION JOINT WITH BACKERROD & GRAY SEALANT.

REV.	DATE	BY	DESCRIPTION

PROJECT NUMBER:	1910-60
DRAWN BY:	MMA
CHECKED BY:	MMA
ISSUE DATE:	4-15-20
ISSUED FOR BIDS & PERMITS	



06/18/20
1:17:34 PM

Job Glass Report

Robert Moxham

Job Name: DOLLAR TREE - Marrianna FL

Phone: 321-419-6703

Email: rmoxham@robinsonglazing.co

Qty	Type	Category	Glass Thick	Width	Height	Block Size	Rake?	Min Area	Min Area OK?	Area Each	Area Price	Area Total	Totals
1-5/16" LOW-E CLEAR													
Annealed													
6	Annealed	panel glass	1.3125	46 3/16	45 5/8	48 x 46	<input type="checkbox"/>	3	<input checked="" type="checkbox"/>	15.33	\$16.00	92.00	\$1,472.00
6	Annealed	panel glass	1.3125	46 3/16	67 5/8	48 x 68	<input type="checkbox"/>	3	<input checked="" type="checkbox"/>	22.67	\$16.00	136.00	\$2,176.00
1	Annealed	transom glass	1.3125	73	31 5/8	74 x 32	<input type="checkbox"/>	3	<input checked="" type="checkbox"/>	16.44	\$16.00	16.44	\$263.11
												13	\$3,911.11
9/16" LOW-E CLEAR													
Annealed													
2	Annealed	door glass	0.5625	29	74	30 x 74	<input type="checkbox"/>	3	<input checked="" type="checkbox"/>	15.42	\$12.00	30.83	\$370.00
												2	\$370.00

Final Glass Totals:

275.28

\$4,281.11

Misc. Glass Totals:

All Lites:	15	
Perimeter of All Glass:	257.00	
Lites without Doors:	13	
Area Annealed:	244.44	\$3,911.11
Area Heat Strengthened:	.00	\$0.00
Area Tempered:	.00	\$0.00
Area Spandrel:	.00	\$0.00
Area Panels:	.00	\$0.00
Area Vent:	.00	\$0.00

Area Miscellaneous:	.00	\$.00
Area Door Lites:	30.83	\$370.00

Note: Glass is priced by Block Size.